

PRMT2 antibody - N-terminal region

Rabbit Polyclonal Antibody

Catalog # AI11698

Product Information

Application	WB, IHC
Primary Accession	P55345
Other Accession	NM_001535 , NP_001526
Reactivity	Human, Mouse, Rat, Rabbit, Pig, Dog, Horse, Bovine
Predicted	Human, Mouse, Rat, Dog, Horse, Bovine
Host	Rabbit
Clonality	Polyclonal
Calculated MW	49042

Additional Information

Gene ID	3275
Alias Symbol	HRMT1L1
Other Names	Protein arginine N-methyltransferase 2, 2.1.1.-, Histone-arginine N-methyltransferase PRMT2, 2.1.1.125, PRMT2, HMT1, HRMT1L1
Format	Liquid. Purified antibody supplied in 1x PBS buffer with 0.09% (w/v) sodium azide and 2% sucrose.
Reconstitution & Storage	Add 100 ul of distilled water. Final anti-PRMT2 antibody concentration is 1 mg/ml in PBS buffer with 2% sucrose. For longer periods of storage, store at 20°C. Avoid repeat freeze-thaw cycles.
Precautions	PRMT2 antibody - N-terminal region is for research use only and not for use in diagnostic or therapeutic procedures.

Protein Information

Name	PRMT2
Synonyms	HMT1, HRMT1L1
Function	Arginine methyltransferase that methylates the guanidino nitrogens of arginyl residues in proteins such as STAT3, FBL, histone H4. Acts as a coactivator (with NCOA2) of the androgen receptor (AR)- mediated transactivation. Acts as a coactivator (with estrogen) of estrogen receptor (ER)-mediated transactivation. Enhances PGR, PPARG, RARA-mediated transactivation. May inhibit NF-kappa-B transcription and promote apoptosis. Represses E2F1 transcriptional activity (in a RB1- dependent manner). May be involved in growth regulation.

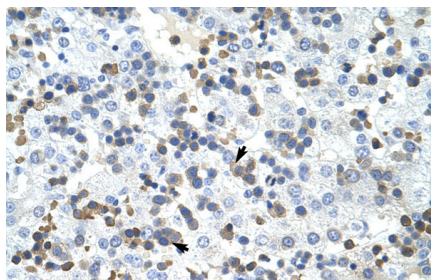
Cellular Location

[Isoform 1]: Cytoplasm. Nucleus. Note=Translocates from the cytoplasm to the nucleus, after hormone exposure. Excluded from nucleolus [Isoform PRMT2Beta]: Cytoplasm. Nucleus. Nucleus, nucleolus [Isoform PRMT2L2]: Cytoplasm. Nucleus Note=Predominantly cytoplasmic

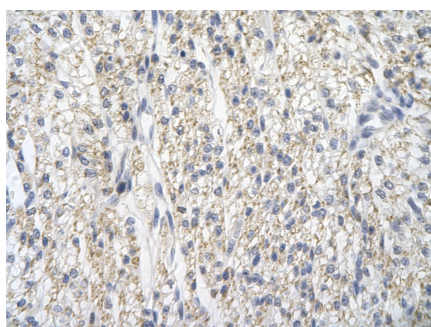
Tissue Location

Widely expressed. Highly expressed in androgen target organs such as heart, prostate, skeletal muscle, ovary and spinal cord.

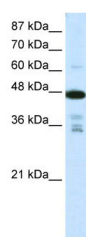
Images



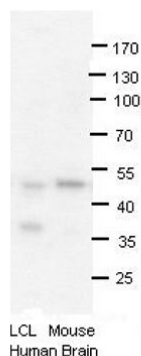
Rabbit Anti-PRMT2 Antibody
Paraffin Embedded Tissue: Human Liver
Cellular Data: Liver cells
Antibody Concentration: 4.0-8.0 µg/ml
Magnification: 400X



Rabbit Anti-PRMT2 Antibody
Paraffin Embedded Tissue: Human cardiac cell
Cellular Data: Epithelial cells of renal tubule
Antibody Concentration: 4.0-8.0 µg/ml
Magnification: 400X



WB Suggested Anti-PRMT2 Antibody Titration: 0.625µg/ml
ELISA Titer: 1:1562500
Positive Control: Jurkat cell lysate



PRMT2 antibody - N-terminal region (AI11698) validated by WB using human LCL and mouse brains at 1:1000.

Please note: All products are 'FOR RESEARCH USE ONLY. NOT FOR USE IN DIAGNOSTIC OR THERAPEUTIC PROCEDURES'.