

RPL9 antibody - C-terminal region

Rabbit Polyclonal Antibody

Catalog # AI11700

Product Information

Application	WB
Primary Accession	P32969
Other Accession	NM_000661 , NP_000652
Reactivity	Human, Mouse, Rat, Rabbit, Zebrafish, Dog, Horse, Bovine
Predicted	Human, Mouse, Rat, Zebrafish, Chicken, Dog
Host	Rabbit
Clonality	Polyclonal
Calculated MW	21863

Additional Information

Gene ID	6133
Alias Symbol	L9, NPC-A-16
Other Names	60S ribosomal protein L9, RPL9
Format	Liquid. Purified antibody supplied in 1x PBS buffer with 0.09% (w/v) sodium azide and 2% sucrose.
Reconstitution & Storage	Add 100 ul of distilled water. Final anti-RPL9 antibody concentration is 1 mg/ml in PBS buffer with 2% sucrose. For longer periods of storage, store at 20°C. Avoid repeat freeze-thaw cycles.
Precautions	RPL9 antibody - C-terminal region is for research use only and not for use in diagnostic or therapeutic procedures.

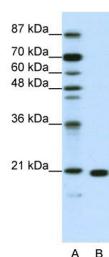
Protein Information

Name	RPL9
Function	Component of the large ribosomal subunit (PubMed: 23636399 , PubMed: 32669547). The ribosome is a large ribonucleoprotein complex responsible for the synthesis of proteins in the cell (PubMed: 23636399 , PubMed: 32669547).
Cellular Location	Cytoplasm.

References

Oh,J.H., (2005) Mamm. Genome 16 (12), 942-954
Reconstitution and Storage: For short term use, store at 2-8C up to 1 week. For long term storage, store at -20C in small aliquots to prevent freeze-thaw cycles.

Images



WB Suggested Anti-RPL9 Antibody Titration: 1.25µg/ml
ELISA Titer: 1:312500
Positive Control: Jurkat cell lysate
RPL9 is supported by BioGPS gene expression data to be expressed in Jurkat

Please note: All products are 'FOR RESEARCH USE ONLY. NOT FOR USE IN DIAGNOSTIC OR THERAPEUTIC PROCEDURES'.