

RPL8 antibody - C-terminal region

Rabbit Polyclonal Antibody

Catalog # AI11702

Product Information

Application	WB, IHC
Primary Accession	P62917
Other Accession	NM_000973 , NP_000964
Reactivity	Human, Mouse, Rat, Rabbit, Zebrafish, Pig, Dog, Bovine, Yeast
Predicted	Human, Mouse, Zebrafish, Pig, Chicken, Dog, Bovine
Host	Rabbit
Clonality	Polyclonal
Calculated MW	28025

Additional Information

Gene ID	6132
Alias Symbol	L8
Other Names	60S ribosomal protein L8, RPL8
Format	Liquid. Purified antibody supplied in 1x PBS buffer with 0.09% (w/v) sodium azide and 2% sucrose.
Reconstitution & Storage	Add 100 ul of distilled water. Final anti-RPL8 antibody concentration is 1 mg/ml in PBS buffer with 2% sucrose. For longer periods of storage, store at 20°C. Avoid repeat freeze-thaw cycles.
Precautions	RPL8 antibody - C-terminal region is for research use only and not for use in diagnostic or therapeutic procedures.

Protein Information

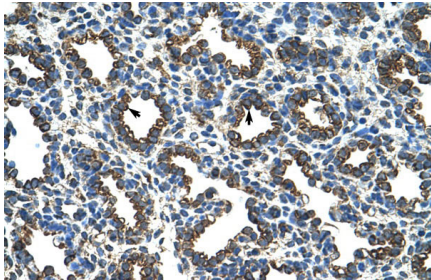
Name	RPL8
Function	Component of the large ribosomal subunit. The ribosome is a large ribonucleoprotein complex responsible for the synthesis of proteins in the cell.
Cellular Location	Cytoplasm.

References

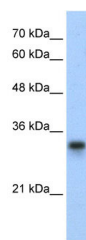
Kenmochi,N., (1998) Genome Res. 8 (5), 509-523 Reconstitution and Storage:For short term use, store at

2-8C up to 1 week. For long term storage, store at -20C in small aliquots to prevent freeze-thaw cycles. Publications: Wong, C. C., Traynor, D., Basse, N., Kay, R. R. & Warren, A. J. Defective ribosome assembly in Shwachman-Diamond syndrome. Blood 118, 4305-12 (2011). WB, Dog, Rat, Human, Pig, Rabbit, Guinea pig, Mouse, Bovine, Zebrafish, Yeast 21803848

Images



Rabbit Anti-RPL8 Antibody
Paraffin Embedded Tissue: Human Lung
Cellular Data: Alveolar cells
Antibody Concentration: 4.0-8.0 µg/ml
Magnification: 400X



WB Suggested Anti-RPL8 Antibody Titration: 0.3125 µg/ml
Positive Control: HepG2 cell lysate

Please note: All products are 'FOR RESEARCH USE ONLY. NOT FOR USE IN DIAGNOSTIC OR THERAPEUTIC PROCEDURES'.