

RPL13 antibody - C-terminal region

Rabbit Polyclonal Antibody
Catalog # AI11704

Product Information

Application	WB, IHC
Primary Accession	P26373
Other Accession	NM_000977 , NP_000968
Reactivity	Human, Mouse, Rat, Rabbit, Zebrafish, Dog, Horse, Bovine
Predicted	Human, Mouse, Dog, Bovine
Host	Rabbit
Clonality	Polyclonal
Calculated MW	24 KDa

Additional Information

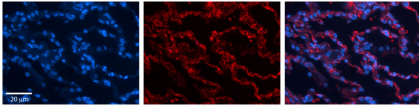
Alias Symbol	BBC1, D16S444E, FLJ27453, FLJ27454, MGC117342, MGC71373, L13, D16S44E
Other Names	60S ribosomal protein L13, Breast basic conserved protein 1, RPL13, BBC1
Format	Liquid. Purified antibody supplied in 1x PBS buffer with 0.09% (w/v) sodium azide and 2% sucrose.
Reconstitution & Storage	Add 50 ul of distilled water. Final anti-RPL13 antibody concentration is 1 mg/ml in PBS buffer with 2% sucrose. For longer periods of storage, store at 20°C. Avoid repeat freeze-thaw cycles.
Precautions	RPL13 antibody - C-terminal region is for research use only and not for use in diagnostic or therapeutic procedures.

Protein Information

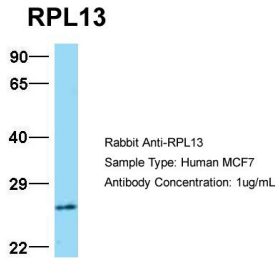
References

Bi,W., (2002) Genome Res. 12 (5), 713-728
Reconstitution and Storage: For short term use, store at 2-8C up to 1 week. For long term storage, store at -20C in small aliquots to prevent freeze-thaw cycles.
Publications: Hartl, T. A. et al. Regulation of ribosome biogenesis by nucleostemin 3 promotes local and systemic growth in Drosophila. Genetics 194, 101-15 (2013).
WB, Human, Mouse, Rat, Dog, Bovine, H, Rabbit, Guinea pig, Zebrafish 23436180

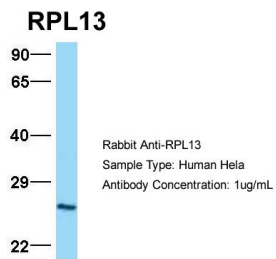
Images



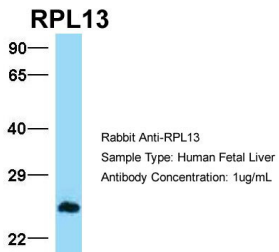
Formalin Fixed Paraffin Embedded Tissue: Human Lung
 Tissue Observed Staining: Cytoplasmic in alveolar mostly
 type I cells
 Primary Antibody
 Concentration: 1:100 Other Working Concentrations:
 1/600
 Secondary Antibody: Donkey anti-Rabbit-Cy3
 Secondary Antibody
 Concentration: 1:200
 Magnification: 20X
 Exposure Time: 0.5 - 2.0 sec



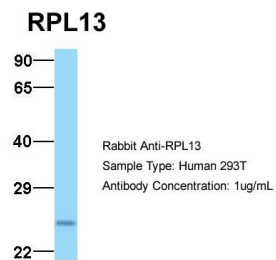
Host: Rabbit
 Target Name: RPL13
 Sample Tissue: MCF7
 Antibody Dilution: 1.0µg/ml RPL13 is strongly supported
 by BioGPS gene expression data to be expressed in MCF7



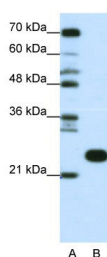
Host: Rabbit
 Target Name: RPL13
 Sample Tissue: HeLa
 Antibody Dilution: 1.0µg/ml There is BioGPS gene
 expression data showing that RPL13 is expressed in HeLa



Host: Rabbit
 Target Name: RPL13
 Sample Tissue: Human Fetal Liver
 Antibody Dilution: 1.0µg/ml



Host: Rabbit
 Target Name: RPL13
 Sample Tissue: 293T
 Antibody Dilution: 1.0µg/ml RPL13 is strongly supported
 by BioGPS gene expression data to be expressed in
 Human HEK293T cells



WB Suggested Anti-RPL13 Antibody Titration:
 0.0625µg/ml
 ELISA Titer: 1:62500
 Positive Control: Jurkat cell lysate

Please note: All products are 'FOR RESEARCH USE ONLY. NOT FOR USE IN DIAGNOSTIC OR THERAPEUTIC PROCEDURES'.