

HNRPD antibody - N-terminal region

Rabbit Polyclonal Antibody
Catalog # AI11709

Product Information

Application	WB, IHC
Primary Accession	Q14103
Other Accession	NM_031370 , NP_112738
Reactivity	Human, Mouse, Rat, Zebrafish, Pig, Dog, Horse, Bovine
Predicted	Human, Mouse, Rat
Host	Rabbit
Clonality	Polyclonal
Calculated MW	39 KDa

Additional Information

Alias Symbol	P37, AUF1, AUF1A, HNRPD, hnRNP0
Other Names	Heterogeneous nuclear ribonucleoprotein D0, hnRNP D0, AU-rich element RNA-binding protein 1, HNRNPD, AUF1, HNRPD
Format	Liquid. Purified antibody supplied in 1x PBS buffer with 0.09% (w/v) sodium azide and 2% sucrose.
Reconstitution & Storage	Add 100 ul of distilled water. Final anti-HNRPD antibody concentration is 1 mg/ml in PBS buffer with 2% sucrose. For longer periods of storage, store at 20°C. Avoid repeat freeze-thaw cycles.
Precautions	HNRPD antibody - N-terminal region is for research use only and not for use in diagnostic or therapeutic procedures.

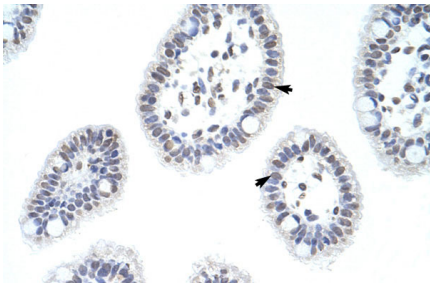
Protein Information

References

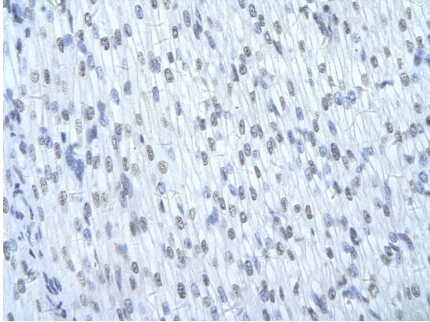
Dhakras,P.S., Am. J. Physiol. Renal Physiol. 290 (2), F313-F318 (2006)Reconstitution and Storage:For short term use, store at 2-8C up to 1 week. For long term storage, store at -20C in small aliquots to prevent freeze-thaw cycles.

Images

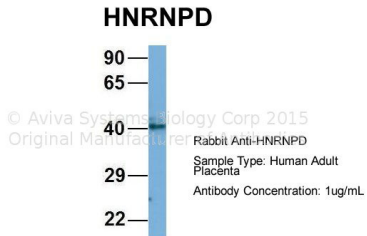
Rabbit Anti-HNRPD Antibody
Paraffin Embedded Tissue: Human Intestine
Cellular Data: Epithelial cells of intestinal villas



Antibody Concentration: 4.0-8.0 µg/ml
Magnification: 400X



Rabbit Anti-HNRNPD Antibody
Paraffin Embedded Tissue: Human cardiac cell
Cellular Data: Epithelial cells of renal tubule
Antibody Concentration: 4.0-8.0 µg/ml
Magnification: 400X



Host: Rabbit
Target Name: CHAD
Sample Tissue: Human Adult Placenta
Antibody Dilution: 1.0µg/ml

Please note: All products are 'FOR RESEARCH USE ONLY. NOT FOR USE IN DIAGNOSTIC OR THERAPEUTIC PROCEDURES'.