

# LUC7L3 Antibody - middle region

Rabbit Polyclonal Antibody

Catalog # AI11710

## Product Information

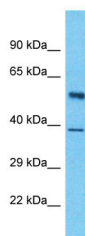
Application	WB
Primary Accession	<a href="#">J3KPP4</a>
Reactivity	Human, Mouse, Rat, Rabbit, Zebrafish, Pig, Dog, Horse, Bovine, Yeast
Predicted	Human, Mouse, Rat, Rabbit, Zebrafish, Pig, Bovine, Yeast
Host	Rabbit
Clonality	Polyclonal
Calculated MW	53 KDa

## Additional Information

Format	Liquid. Purified antibody supplied in 1x PBS buffer with 0.09% (w/v) sodium azide and 2% sucrose.
Reconstitution & Storage	Add 50 ul of distilled water. Final anti-LUC7L3 antibody concentration is 1 mg/ml in PBS buffer with 2% sucrose. For longer periods of storage, store at 20°C. Avoid repeat freeze-thaw cycles.
Precautions	LUC7L3 Antibody - middle region is for research use only and not for use in diagnostic or therapeutic procedures.

## Protein Information

## Images



Host: Rabbit  
Target Name: LUC7L3  
Sample Tissue: Pancreas Tumor lysates  
Antibody Dilution: 1.0µg/ml

Please note: All products are 'FOR RESEARCH USE ONLY. NOT FOR USE IN DIAGNOSTIC OR THERAPEUTIC PROCEDURES'.