

GTPBP9 antibody - C-terminal region

Rabbit Polyclonal Antibody

Catalog # AI11717

Product Information

Application	WB
Primary Accession	Q9NTK5
Other Accession	NM_013341 , NP_037473
Reactivity	Human, Mouse, Rat, Rabbit, Zebrafish, Pig, Goat, Dog, Horse, Bovine
Predicted	Mouse, Rat, Chicken, Bovine
Host	Rabbit
Clonality	Polyclonal
Calculated MW	44744

Additional Information

Gene ID	29789
Alias Symbol	DOC45, GBP45, GTBP9, GTPBP9, PTD004
Other Names	Obg-like ATPase 1 {ECO:0000255 HAMAP-Rule:MF_03167}, DNA damage-regulated overexpressed in cancer 45, DOC45, GTP-binding protein 9, OLA1 {ECO:0000255 HAMAP-Rule:MF_03167}, GTPBP9
Format	Liquid. Purified antibody supplied in 1x PBS buffer with 0.09% (w/v) sodium azide and 2% sucrose.
Reconstitution & Storage	Add 50 ul of distilled water. Final anti-GTPBP9 antibody concentration is 1 mg/ml in PBS buffer with 2% sucrose. For longer periods of storage, store at 20°C. Avoid repeat freeze-thaw cycles.
Precautions	GTPBP9 antibody - C-terminal region is for research use only and not for use in diagnostic or therapeutic procedures.

Protein Information

Name	OLA1 {ECO:0000255 HAMAP-Rule:MF_03167}
Synonyms	GTPBP9
Function	Hydrolyzes ATP, and can also hydrolyze GTP with lower efficiency. Has lower affinity for GTP.
Cellular Location	Cytoplasm {ECO:0000255 HAMAP-Rule:MF_03167, ECO:0000269 PubMed:20053727}. Nucleus {ECO:0000255 HAMAP-Rule:MF_03167, ECO:0000269 PubMed:20053727}. Nucleus, nucleolus {ECO:0000255 HAMAP-Rule:MF_03167,

ECO:0000269|PubMed:20053727}. Note=Predominantly cytoplasmic, shuttles between the nucleus and the cytoplasm
{ECO:0000255|HAMAP-Rule:MF_03167}

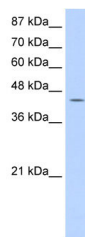
Tissue Location

Expressed in all tissues tested but its expression is more abundant in testis, liver, lung, and brain. Overexpressed in several malignancies, including cancers of the colon, rectum, ovary, lung, stomach, and uterus

References

Wiemann,S., (2001) Genome Res. 11 (3), 422-435
Reconstitution and Storage:For short term use, store at 2-8C up to 1 week. For long term storage, store at -20C in small aliquots to prevent freeze-thaw cycles.

Images



WB Suggested Anti-GTPBP9 Antibody Titration: 0.2-1
µg/ml
Positive Control: Jurkat cell lysate

Please note: All products are 'FOR RESEARCH USE ONLY. NOT FOR USE IN DIAGNOSTIC OR THERAPEUTIC PROCEDURES'.