

# GTPBP9 antibody - N-terminal region

Rabbit Polyclonal Antibody

Catalog # AI11718

## Product Information

<b>Application</b>	WB, IHC
<b>Primary Accession</b>	<a href="#">Q9NTK5</a>
<b>Other Accession</b>	<a href="#">NM_013341</a> , <a href="#">NP_037473</a>
<b>Reactivity</b>	Human, Mouse, Rat, Rabbit, Zebrafish, Pig, Dog, Horse, Bovine
<b>Predicted</b>	Mouse, Rat, Zebrafish
<b>Host</b>	Rabbit
<b>Clonality</b>	Polyclonal
<b>Calculated MW</b>	44744

## Additional Information

<b>Gene ID</b>	29789
<b>Alias Symbol</b>	DOC45, GBP45, GTBP9, GTPBP9, PTD004
<b>Other Names</b>	Obg-like ATPase 1 {ECO:0000255 HAMAP-Rule:MF_03167}, DNA damage-regulated overexpressed in cancer 45, DOC45, GTP-binding protein 9, OLA1 {ECO:0000255 HAMAP-Rule:MF_03167}, GTPBP9
<b>Format</b>	Liquid. Purified antibody supplied in 1x PBS buffer with 0.09% (w/v) sodium azide and 2% sucrose.
<b>Reconstitution &amp; Storage</b>	Add 100 ul of distilled water. Final anti-GTPBP9 antibody concentration is 1 mg/ml in PBS buffer with 2% sucrose. For longer periods of storage, store at 20°C. Avoid repeat freeze-thaw cycles.
<b>Precautions</b>	GTPBP9 antibody - N-terminal region is for research use only and not for use in diagnostic or therapeutic procedures.

## Protein Information

<b>Name</b>	OLA1 {ECO:0000255 HAMAP-Rule:MF_03167}
<b>Synonyms</b>	GTPBP9
<b>Function</b>	Hydrolyzes ATP, and can also hydrolyze GTP with lower efficiency. Has lower affinity for GTP.
<b>Cellular Location</b>	Cytoplasm {ECO:0000255 HAMAP-Rule:MF_03167, ECO:0000269 PubMed:20053727}. Nucleus {ECO:0000255 HAMAP-Rule:MF_03167, ECO:0000269 PubMed:20053727}. Nucleus, nucleolus {ECO:0000255 HAMAP-Rule:MF_03167,

ECO:0000269 | PubMed:20053727}. Note=Predominantly cytoplasmic, shuttles between the nucleus and the cytoplasm  
{ECO:0000255 | HAMAP-Rule:MF\_03167}

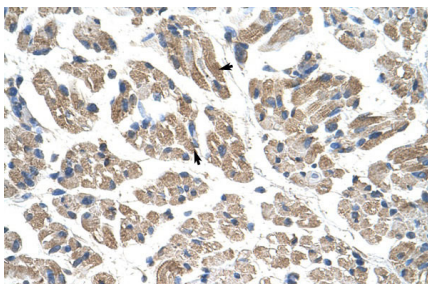
## Tissue Location

Expressed in all tissues tested but its expression is more abundant in testis, liver, lung, and brain. Overexpressed in several malignancies, including cancers of the colon, rectum, ovary, lung, stomach, and uterus

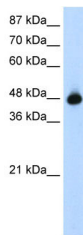
## References

Wiemann,S., (2001) Genome Res. 11 (3), 422-435  
Reconstitution and Storage:For short term use, store at 2-8C up to 1 week. For long term storage, store at -20C in small aliquots to prevent freeze-thaw cycles.

## Images



Rabbit Anti-GTPBP9 Antibody  
Paraffin Embedded Tissue: Human Muscle  
Cellular Data: Skeletal muscle cells  
Antibody Concentration: 4.0-8.0 µg/ml  
Magnification: 400X



WB Suggested Anti-GTPBP9 Antibody Titration: 1.25µg/ml  
Positive Control: HepG2 cell lysate  
OLA1 is supported by BioGPS gene expression data to be expressed in HepG2

Please note: All products are 'FOR RESEARCH USE ONLY. NOT FOR USE IN DIAGNOSTIC OR THERAPEUTIC PROCEDURES'.