

U2AF2 antibody - C-terminal region

Rabbit Polyclonal Antibody

Catalog # AI11721

Product Information

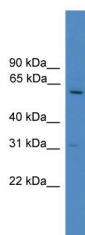
Application	WB
Primary Accession	Q80XR5
Other Accession	NM_001012478 , NP_001012496
Reactivity	Human, Mouse, Rat, Zebrafish, Dog, Horse, Bovine, Yeast
Predicted	Human, Mouse, Rat, Zebrafish, Bovine
Host	Rabbit
Clonality	Polyclonal
Calculated MW	53 kDa

Additional Information

Alias Symbol	U2AF65
Format	Liquid. Purified antibody supplied in 1x PBS buffer with 0.09% (w/v) sodium azide and 2% sucrose.
Reconstitution & Storage	Add 50 ul of distilled water. Final anti-U2AF2 antibody concentration is 1 mg/ml in PBS buffer with 2% sucrose. For longer periods of storage, store at 20°C. Avoid repeat freeze-thaw cycles.
Precautions	U2AF2 antibody - C-terminal region is for research use only and not for use in diagnostic or therapeutic procedures.

Protein Information

Images



WB Suggested Anti-U2AF2 Antibody Titration: 0.2-1 µg/ml
ELISA Titer: 1:62500
Positive Control: HepG2 cell lysate
There is BioGPS gene expression data showing that U2AF2 is expressed in HepG2