

RAE1 antibody - C-terminal region

Rabbit Polyclonal Antibody

Catalog # AI11725

Product Information

Application	WB, IHC
Primary Accession	P78406
Other Accession	NM_001015885 , NP_001015885
Reactivity	Human, Mouse, Rat, Rabbit, Zebrafish, Pig, Dog, Horse, Bovine
Predicted	Human, Mouse, Rat, Rabbit, Zebrafish, Chicken, Dog, Bovine
Host	Rabbit
Clonality	Polyclonal
Calculated MW	40968

Additional Information

Gene ID	8480
Alias Symbol	MIG14, MRNP41, Mnnp41, dj481F12.3, dj800J21.1
Other Names	mRNA export factor, Rae1 protein homolog, mRNA-associated protein mrnp 41, RAE1, MRNP41
Format	Liquid. Purified antibody supplied in 1x PBS buffer with 0.09% (w/v) sodium azide and 2% sucrose.
Reconstitution & Storage	Add 50 ul of distilled water. Final anti-RAE1 antibody concentration is 1 mg/ml in PBS buffer with 2% sucrose. For longer periods of storage, store at 20°C. Avoid repeat freeze-thaw cycles.
Precautions	RAE1 antibody - C-terminal region is for research use only and not for use in diagnostic or therapeutic procedures.

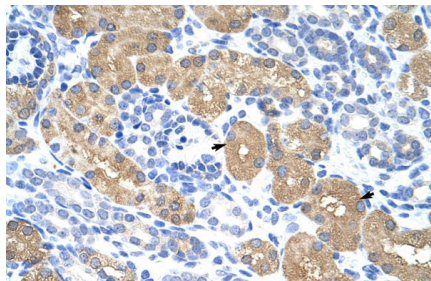
Protein Information

Name	RAE1
Synonyms	MRNP41
Function	Acts as a mRNA export factor involved in nucleocytoplasmic transport (PubMed: 20498086 , PubMed: 33849972). Plays a role in mitotic bipolar spindle formation (PubMed: 17172455). May function in attaching cytoplasmic mRNPs to the cytoskeleton both directly or indirectly (PubMed: 17172455).
Cellular Location	Cytoplasm. Nucleus. Cytoplasm, cytoskeleton, spindle pole. Nucleus envelope. Note=Recruited from interphase nuclei to spindle MTs during mitosis.

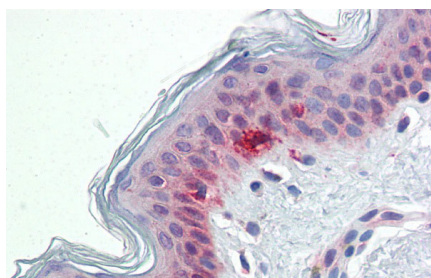
References

Blower, M.D., (2005) Cell 121 (2), 223-234
Reconstitution and Storage: For short term use, store at 2-8°C up to 1 week. For long term storage, store at -20°C in small aliquots to prevent freeze-thaw cycles.

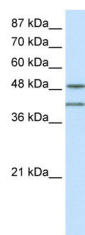
Images



Rabbit Anti-RAE1 Antibody
Paraffin Embedded Tissue: Human Kidney
Cellular Data: Epithelial cells of renal tubule
Antibody Concentration: 4.0-8.0 µg/ml
Magnification: 400X



Immunohistochemistry with Human Skin lysate tissue at an antibody concentration of 5.0 µg/ml using anti-RAE1 antibody (AI11725)



WB Suggested Anti-RAE1 Antibody Titration: 0.2-1 µg/ml
ELISA Titer: 1:312500
Positive Control: Jurkat cell lysate
RAE1 is strongly supported by BioGPS gene expression data to be expressed in Human Jurkat cells

Please note: All products are 'FOR RESEARCH USE ONLY. NOT FOR USE IN DIAGNOSTIC OR THERAPEUTIC PROCEDURES'.