

CUGBP2 antibody - N-terminal region

Rabbit Polyclonal Antibody

Catalog # AI11729

Product Information

Application	WB, IHC
Primary Accession	Q96RQ6
Other Accession	NM_006561 , NP_006552
Reactivity	Human, Mouse, Rat, Rabbit, Zebrafish, Dog, Horse, Bovine
Predicted	Zebrafish
Host	Rabbit
Clonality	Polyclonal
Calculated MW	56 kDa

Additional Information

Alias Symbol	ETR3, ETR-3, NAPOR, CUGBP2, BRUNOL3
Format	Liquid. Purified antibody supplied in 1x PBS buffer with 0.09% (w/v) sodium azide and 2% sucrose.
Reconstitution & Storage	Add 100 ul of distilled water. Final anti-CUGBP2 antibody concentration is 1 mg/ml in PBS buffer with 2% sucrose. For longer periods of storage, store at 20°C. Avoid repeat freeze-thaw cycles.
Precautions	CUGBP2 antibody - N-terminal region is for research use only and not for use in diagnostic or therapeutic procedures.

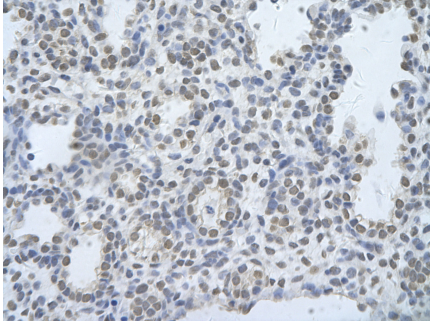
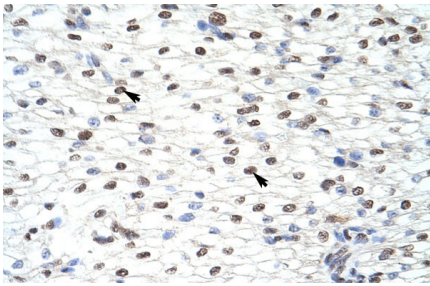
Protein Information

References

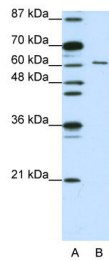
Han,J. (2005) (er) Nucleic Acids Res. 33 (9), 2769-2780
Reconstitution and Storage: For short term use, store at 2-8°C up to 1 week. For long term storage, store at -20°C in small aliquots to prevent freeze-thaw cycles.

Images

Rabbit Anti-CUGBP2 Antibody
Paraffin Embedded Tissue: Human Heart
Cellular Data: Myocardial cells
Antibody Concentration: 4.0-8.0 µg/ml
Magnification: 400X



Rabbit Anti-CELF2 Antibody
 Paraffin Embedded Tissue: Human alveolar cell
 Cellular Data: Epithelial cells of renal tubule
 Antibody Concentration: 4.0-8.0 µg/ml
 Magnification: 400X



WB Suggested Anti-CUGBP2 Antibody Titration: 1.25µg/ml
 ELISA Titer: 1:312500
 Positive Control: Jurkat cell lysate
 CELF2 is strongly supported by BioGPS gene expression data to be expressed in Human Jurkat cells

Please note: All products are 'FOR RESEARCH USE ONLY. NOT FOR USE IN DIAGNOSTIC OR THERAPEUTIC PROCEDURES'.