

NOVA1 antibody - C-terminal region

Rabbit Polyclonal Antibody

Catalog # AI11742

Product Information

Application	WB
Primary Accession	A8K603
Other Accession	NM_002515 , NP_002506
Reactivity	Human, Mouse, Rat, Rabbit, Zebrafish, Pig, Dog, Horse, Bovine
Predicted	Mouse, Rat, Rabbit, Zebrafish, Pig, Chicken, Bovine
Host	Rabbit
Clonality	Polyclonal
Calculated MW	52 KDa

Additional Information

Alias Symbol	Nova-1
Format	Liquid. Purified antibody supplied in 1x PBS buffer with 0.09% (w/v) sodium azide and 2% sucrose.
Reconstitution & Storage	Add 50 ul of distilled water. Final anti-NOVA1 antibody concentration is 1 mg/ml in PBS buffer with 2% sucrose. For longer periods of storage, store at 20°C. Avoid repeat freeze-thaw cycles.
Precautions	NOVA1 antibody - C-terminal region is for research use only and not for use in diagnostic or therapeutic procedures.

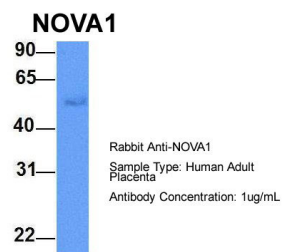
Protein Information

References

Ratti,A., (2008) J. Biol. Chem. 283 (12), 7531-7541 Reconstitution and Storage:For short term use, store at 2-8C up to 1 week. For long term storage, store at -20C in small aliquots to prevent freeze-thaw cycles.

Images

Host:Rabbit
Target Name:NOVA1
Sample Tissue:Human Adult Placenta
Antibody Dilution: 1.0µg/ml



Please note: All products are 'FOR RESEARCH USE ONLY. NOT FOR USE IN DIAGNOSTIC OR THERAPEUTIC PROCEDURES'.