

NOVA1 antibody - middle region

Rabbit Polyclonal Antibody

Catalog # AI11743

Product Information

Application	WB
Primary Accession	A8K603
Other Accession	NM_002515 , NP_002506
Reactivity	Human, Mouse, Rat, Rabbit, Pig, Dog, Horse, Bovine
Predicted	Mouse, Rat, Rabbit, Pig, Chicken, Bovine
Host	Rabbit
Clonality	Polyclonal
Calculated MW	52 KDa

Additional Information

Alias Symbol	Nova-1
Format	Liquid. Purified antibody supplied in 1x PBS buffer with 0.09% (w/v) sodium azide and 2% sucrose.
Reconstitution & Storage	Add 50 ul of distilled water. Final anti-NOVA1 antibody concentration is 1 mg/ml in PBS buffer with 2% sucrose. For longer periods of storage, store at 20°C. Avoid repeat freeze-thaw cycles.
Precautions	NOVA1 antibody - middle region is for research use only and not for use in diagnostic or therapeutic procedures.

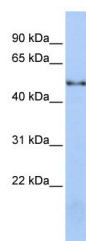
Protein Information

References

Ratti,A., (2008) J. Biol. Chem. 283 (12), 7531-7541 Reconstitution and Storage:For short term use, store at 2-8C up to 1 week. For long term storage, store at -20C in small aliquots to prevent freeze-thaw cycles.

Images

WB Suggested Anti-NOVA1 Antibody Titration: 0.2-1 µg/ml
ELISA Titer: 1:1562500
Positive Control: Jurkat cell lysate



Please note: All products are 'FOR RESEARCH USE ONLY. NOT FOR USE IN DIAGNOSTIC OR THERAPEUTIC PROCEDURES'.