

PIGF antibody - N-terminal region

Rabbit Polyclonal Antibody

Catalog # AI11745

Product Information

Application	WB, IHC
Primary Accession	Q07326
Other Accession	NM_002643 , NP_002634
Reactivity	Human, Mouse, Rat, Pig, Dog, Horse, Bovine, Sheep
Predicted	Human, Mouse, Dog, Bovine
Host	Rabbit
Clonality	Polyclonal
Calculated MW	24890

Additional Information

Gene ID	5281
Alias Symbol	MGC32646, MGC33136
Other Names	Phosphatidylinositol-glycan biosynthesis class F protein, PIG-F, GPI11 homolog, PIGF
Format	Liquid. Purified antibody supplied in 1x PBS buffer with 0.09% (w/v) sodium azide and 2% sucrose.
Reconstitution & Storage	Add 50 ul of distilled water. Final anti-PIGF antibody concentration is 1 mg/ml in PBS buffer with 2% sucrose. For longer periods of storage, store at 20°C. Avoid repeat freeze-thaw cycles.
Precautions	PIGF antibody - N-terminal region is for research use only and not for use in diagnostic or therapeutic procedures.

Protein Information

Name	PIGF (HGNC:8962)
Function	Stabilizing subunit of the ethanolamine phosphate transferase 3 and ethanolamine phosphate transferase 2 complexes that sequentially transfer an ethanolamine phosphate (EtNP) from a phosphatidylethanolamine (PE) to the 6-OH position of the third alpha- 1,2-linked mannose and the second alpha-1,6-linked mannose of the alpha-D-Man-(1->2)-alpha-D-Man-(1->6)-2-PEtn-alpha-D-Man-(1->4)-alpha-D-GlcN-(1->6)-(1-radyl,2-acyl-sn-glycero-3-phospho)-2-acyl-inositol (also termed H6) intermediate to generate a 6-PEtn-alpha-D-Man-(1->2)-6-PEtn-alpha-D-Man-(1->6)-2-PEtn-alpha-D-Man-(1->4)-alpha-D-GlcN-(1->6)-(1-radyl,2-acyl-sn-glycero-3-phospho)-2-acyl-inositol (also termed H8)

(PubMed:[15632136](#)). Participates in the tenth and eleventh steps of the glycosylphosphatidylinositol-anchor biosynthesis, in association with PIGO and PIGG, respectively (PubMed:[15632136](#), PubMed:[33386993](#)).

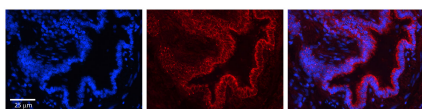
Cellular Location

Endoplasmic reticulum membrane; Multi-pass membrane protein

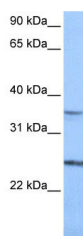
References

Mohammed,K.A., Am. J. Physiol. Lung Cell Mol. Physiol. 292 (2), L559-L566 (2007)Reconstitution and Storage:For short term use, store at 2-8C up to 1 week. For long term storage, store at -20C in small aliquots to prevent freeze-thaw cycles.

Images



PIGF antibody - N-terminal region (AI11745)
Catalog Number: AI11745
Formalin Fixed Paraffin Embedded Tissue: Human
Bronchial Epithelial Tissue Observed Staining: Cytoplasm
in Human Bronchial Epithelial Tissue
Primary Antibody
Concentration: 1:100
Secondary Antibody: Donkey anti-Rabbit-Cy3
Secondary Antibody
Concentration: 1:200
Magnification: 20X
Exposure Time: 0.5 - 2.0 sec



WB Suggested Anti-PIGF Antibody Titration: 0.2-1 µg/ml
Positive Control: Jurkat cell lysate

Please note: All products are 'FOR RESEARCH USE ONLY. NOT FOR USE IN DIAGNOSTIC OR THERAPEUTIC PROCEDURES'.