

RNASEH1 antibody - middle region

Rabbit Polyclonal Antibody

Catalog # AI11750

Product Information

Application	WB
Primary Accession	O60930
Other Accession	NM_002936 , NP_002927
Reactivity	Human, Mouse, Rat, Rabbit, Zebrafish, Pig, Dog, Horse, Bovine, Yeast
Predicted	Human, Mouse, Dog, Bovine
Host	Rabbit
Clonality	Polyclonal
Calculated MW	32064

Additional Information

Gene ID	246243
Alias Symbol	H1RNA, RNH1
Other Names	Ribonuclease H1, RNase H1, 3.1.26.4, Ribonuclease H type II, RNASEH1, RNH1
Format	Liquid. Purified antibody supplied in 1x PBS buffer with 0.09% (w/v) sodium azide and 2% sucrose.
Reconstitution & Storage	Add 50 ul of distilled water. Final anti-RNASEH1 antibody concentration is 1 mg/ml in PBS buffer with 2% sucrose. For longer periods of storage, store at 20°C. Avoid repeat freeze-thaw cycles.
Precautions	RNASEH1 antibody - middle region is for research use only and not for use in diagnostic or therapeutic procedures.

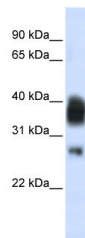
Protein Information

Name	RNASEH1
Synonyms	RNH1
Function	Endonuclease that specifically degrades the RNA of RNA-DNA hybrids (PubMed: 10497183). Plays a role in RNA polymerase II (RNAP II) transcription termination by degrading R-loop RNA-DNA hybrid formation at G-rich pause sites located downstream of the poly(A) site and behind the elongating RNAP II (PubMed: 21700224).
Cellular Location	Cytoplasm.
Tissue Location	Ubiquitous.

References

Nowotny,M., (2008) EMBO J. 27 (7), 1172-1181 Reconstitution and Storage:For short term use, store at 2-8C up to 1 week. For long term storage, store at -20C in small aliquots to prevent freeze-thaw cycles.

Images



WB Suggested Anti-RNASEH1 Antibody Titration: 0.2-1
µg/ml
ELISA Titer: 1:62500
Positive Control: Jurkat cell lysate
RNASEH1 is strongly supported by BioGPS gene
expression data to be expressed in Human Jurkat cells

Please note: All products are 'FOR RESEARCH USE ONLY. NOT FOR USE IN DIAGNOSTIC OR THERAPEUTIC PROCEDURES'.