

Srp54a antibody - C-terminal region

Rabbit Polyclonal Antibody

Catalog # AI11751

Product Information

Application	WB
Primary Accession	Q6AYB5
Other Accession	NM_053871 , NP_446323
Reactivity	Human, Mouse, Rat, Rabbit, Zebrafish, Pig, Dog, Horse, Bovine, Sheep
Predicted	Human, Mouse, Rat, Rabbit, Pig, Dog, Horse, Bovine
Host	Rabbit
Clonality	Polyclonal
Calculated MW	55705

Additional Information

Gene ID	116650
Alias Symbol	Srp54, Srp54a
Other Names	Signal recognition particle 54 kDa protein, SRP54, Srp54
Format	Liquid. Purified antibody supplied in 1x PBS buffer with 0.09% (w/v) sodium azide and 2% sucrose.
Reconstitution & Storage	Add 50 ul of distilled water. Final anti-Srp54a antibody concentration is 1 mg/ml in PBS buffer with 2% sucrose. For longer periods of storage, store at 20°C. Avoid repeat freeze-thaw cycles.
Precautions	Srp54a antibody - C-terminal region is for research use only and not for use in diagnostic or therapeutic procedures.

Protein Information

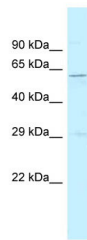
Name	Srp54
Function	Component of the signal recognition particle (SRP) complex, a ribonucleoprotein complex that mediates the cotranslational targeting of secretory and membrane proteins to the endoplasmic reticulum (ER) (By similarity). As part of the SRP complex, associates with the SRP receptor (SR) component SRPRA to target secretory proteins to the endoplasmic reticulum membrane (By similarity). Binds to the signal sequence of presecretory proteins when they emerge from the ribosomes (By similarity). Displays basal GTPase activity, and stimulates reciprocal GTPase activation of the SR subunit SRPRA (By similarity). Forms a guanosine 5'-triphosphate (GTP)-dependent complex with the SR subunit SRPRA (By similarity). SR compaction and GTPase mediated rearrangement of SR drive SRP-mediated cotranslational protein

translocation into the ER (By similarity). Requires the presence of SRP9/SRP14 and/or SRP19 to stably interact with RNA (By similarity). Plays a role in proliferation and differentiation of granulocytic cells, neutrophils migration capacity and exocrine pancreas development (By similarity).

Cellular Location

Nucleus speckle {ECO:0000250|UniProtKB:P61011}. Cytoplasm {ECO:0000250|UniProtKB:P61011}. Endoplasmic reticulum {ECO:0000250|UniProtKB:P61011}

Images



WB Suggested Anti-Srp54a Antibody Titration: 1.0 µg/ml
Positive Control: Rat Muscle

Please note: All products are 'FOR RESEARCH USE ONLY. NOT FOR USE IN DIAGNOSTIC OR THERAPEUTIC PROCEDURES'.