

SFRS9 antibody - middle region

Rabbit Polyclonal Antibody

Catalog # AI11755

Product Information

Application	WB
Primary Accession	Q13242
Other Accession	NM_003769 , NP_003760
Reactivity	Human, Mouse, Rat, Rabbit, Zebrafish, Pig, Dog, Horse, Bovine
Predicted	Human, Mouse, Rat, Zebrafish, Dog
Host	Rabbit
Clonality	Polyclonal
Calculated MW	25542

Additional Information

Gene ID	8683
Alias Symbol	SRp30c, SFRS9
Other Names	Serine/arginine-rich splicing factor 9, Pre-mRNA-splicing factor SRp30C, Splicing factor, arginine/serine-rich 9, SRSF9, SFRS9, SRP30C
Format	Liquid. Purified antibody supplied in 1x PBS buffer with 0.09% (w/v) sodium azide and 2% sucrose.
Reconstitution & Storage	Add 50 ul of distilled water. Final anti-SFRS9 antibody concentration is 1 mg/ml in PBS buffer with 2% sucrose. For longer periods of storage, store at 20°C. Avoid repeat freeze-thaw cycles.
Precautions	SFRS9 antibody - middle region is for research use only and not for use in diagnostic or therapeutic procedures.

Protein Information

Name	SRSF9
Synonyms	SFRS9, SRP30C
Function	Plays a role in constitutive splicing and can modulate the selection of alternative splice sites. Represses the splicing of MAPT/Tau exon 10.
Cellular Location	Nucleus. Note=Cellular stresses such as heat shock may induce localization to discrete nuclear bodies termed SAM68 nuclear bodies (SNBs), HAP bodies, or stress bodies. Numerous splicing factors including SRSF1/SFRS1/SF2, SRSF7/SFRS7, SAFB and KHDRBS1/SAM68 accumulate at these structures, which may participate in the post- transcriptional regulation of mRNAs in

stressed cells

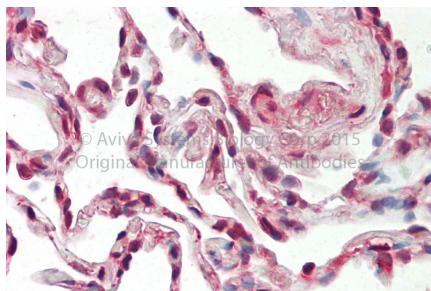
Tissue Location

Expressed at high levels in the heart, kidney, pancreas and placenta, and at lower levels in the brain, liver, lung and skeletal muscle.

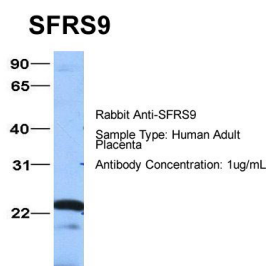
References

Paradis,C., (2007) RNA 13 (8), 1287-1300 Reconstitution and Storage:For short term use, store at 2-8C up to 1 week. For long term storage, store at -20C in small aliquots to prevent freeze-thaw cycles.

Images



Rabbit Anti-SRSF9 antibody
Formalin Fixed Paraffin Embedded Tissue: Human Adult Lung
Observed Staining: Cytoplasm in hepatocytes
Primary Antibody
Concentration: 1:600
Secondary Antibody: Donkey anti-Rabbit-Cy3
Secondary Antibody
Concentration: 1:200
Magnification: 20X
Exposure Time: 0.5 sec



Host: Rabbit
Target Name: SFRS9
Sample Tissue: Human Adult Placenta
Antibody Dilution: 1.0µg/ml

Please note: All products are 'FOR RESEARCH USE ONLY. NOT FOR USE IN DIAGNOSTIC OR THERAPEUTIC PROCEDURES'.