

CPNE1 antibody - N-terminal region

Rabbit Polyclonal Antibody

Catalog # AI11758

Product Information

Application	WB, IHC
Primary Accession	Q99829
Other Accession	NM_003915 , NP_003906
Reactivity	Human, Mouse, Rat, Rabbit, Zebrafish, Pig, Dog, Horse, Bovine, Sheep
Predicted	Human, Mouse, Rabbit, Pig, Chicken, Dog, Horse, Bovine, Sheep
Host	Rabbit
Clonality	Polyclonal
Calculated MW	59059

Additional Information

Gene ID	8904
Alias Symbol	CPN1, COPN1
Other Names	Copine-1, Copine I, CPNE1, CPN1
Format	Liquid. Purified antibody supplied in 1x PBS buffer with 0.09% (w/v) sodium azide and 2% sucrose.
Reconstitution & Storage	Add 100 ul of distilled water. Final anti-CPNE1 antibody concentration is 1 mg/ml in PBS buffer with 2% sucrose. For longer periods of storage, store at 20°C. Avoid repeat freeze-thaw cycles.
Precautions	CPNE1 antibody - N-terminal region is for research use only and not for use in diagnostic or therapeutic procedures.

Protein Information

Name	CPNE1 (HGNC:2314)
Synonyms	CPN1
Function	Calcium-dependent phospholipid-binding protein that plays a role in calcium-mediated intracellular processes (PubMed: 14674885). Involved in the TNF-alpha receptor signaling pathway in a calcium- dependent manner (PubMed: 14674885). Exhibits calcium-dependent phospholipid binding properties (PubMed: 19539605 , PubMed: 9430674). Plays a role in neuronal progenitor cell differentiation; induces neurite outgrowth via a AKT-dependent signaling cascade and calcium- independent manner (PubMed: 23263657 , PubMed: 25450385). May recruit target proteins to the cell membrane in a calcium-dependent manner (PubMed: 12522145). May

function in membrane trafficking (PubMed:[9430674](#)). Involved in TNF-alpha-induced NF-kappa-B transcriptional repression by inducing endoprotease processing of the transcription factor NF-kappa-B p65/RELA subunit (PubMed:[18212740](#)). Also induces endoprotease processing of NF-kappa-B p50/NFKB1, p52/NFKB2, RELB and REL (PubMed:[18212740](#)).

Cellular Location

Nucleus. Cytoplasm. Cell membrane Note=Translocates to the cell membrane in a calcium-dependent manner (PubMed:21087455, PubMed:25450385).

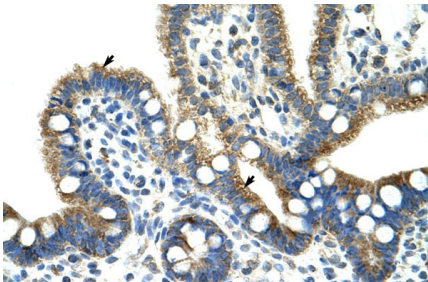
Tissue Location

Expressed in neutrophils (at protein level) (PubMed:12949241). Widely expressed. Expressed in the brain. Expressed in neutrophil precursors from bone marrow and peripheral blood (PubMed:12949241).

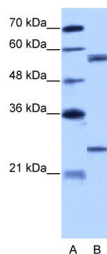
References

Tomsig,J.L., Biochem. J. 378 (PT 3), 1089-1094 (2004)Reconstitution and Storage:For short term use, store at 2-8C up to 1 week. For long term storage, store at -20C in small aliquots to prevent freeze-thaw cycles.

Images



Rabbit Anti-CPNE1 Antibody
Paraffin Embedded Tissue: Human Intestine
Cellular Data: Epithelial cells of intestinal villas
Antibody Concentration: 4.0-8.0 µg/ml
Magnification: 400X



WB Suggested Anti-CPNE1 Antibody Titration: 5.0µg/ml
Positive Control: HepG2 cell lysate
CPNE1 is supported by BioGPS gene expression data to be expressed in HepG2

Please note: All products are 'FOR RESEARCH USE ONLY. NOT FOR USE IN DIAGNOSTIC OR THERAPEUTIC PROCEDURES'.