

TROVE2 antibody - N-terminal region

Rabbit Polyclonal Antibody

Catalog # AI11762

Product Information

Application	WB, IHC
Primary Accession	P10155
Other Accession	NM_001042369 , NP_001035828
Reactivity	Human, Mouse, Rat, Rabbit, Dog, Horse, Bovine
Predicted	Mouse, Pig, Horse, Bovine
Host	Rabbit
Clonality	Polyclonal
Calculated MW	60671

Additional Information

Gene ID	6738
Alias Symbol	RO60, SSA2, RORNP
Other Names	60 kDa SS-A/Ro ribonucleoprotein, 60 kDa Ro protein, 60 kDa ribonucleoprotein Ro, RoRNP, Ro 60 kDa autoantigen, Sjogren syndrome antigen A2, Sjogren syndrome type A antigen, SS-A, TROVE domain family member 2, TROVE2, RO60, SSA2
Format	Liquid. Purified antibody supplied in 1x PBS buffer with 0.09% (w/v) sodium azide and 2% sucrose.
Reconstitution & Storage	Add 50 ul of distilled water. Final anti-TROVE2 antibody concentration is 1 mg/ml in PBS buffer with 2% sucrose. For longer periods of storage, store at 20°C. Avoid repeat freeze-thaw cycles.
Precautions	TROVE2 antibody - N-terminal region is for research use only and not for use in diagnostic or therapeutic procedures.

Protein Information

Name	RO60 (HGNC:11313)
Function	RNA-binding protein that binds to misfolded non-coding RNAs, pre-5S rRNA, and several small cytoplasmic RNA molecules known as Y RNAs (PubMed: 18056422 , PubMed: 26382853). Binds to endogenous Alu retroelements which are induced by type I interferon and stimulate proinflammatory cytokine secretion (PubMed: 26382853). Regulates the expression of Alu retroelements as well as inflammatory genes (PubMed: 26382853). May play roles in cilia formation and/or maintenance (By similarity).

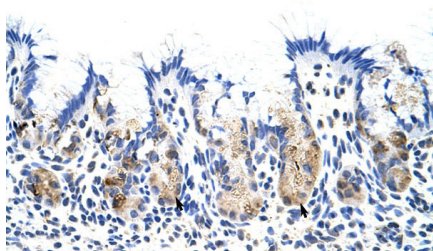
Cellular Location

Cytoplasm. Note=Localized in cytoplasmic mRNP granules containing untranslated mRNAs.

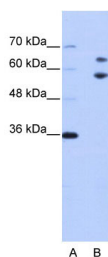
References

Hennig,J., (2005) J. Biol. Chem. 280 (39), 33250-33261
Reconstitution and Storage:For short term use, store at 2-8C up to 1 week. For long term storage, store at -20C in small aliquots to prevent freeze-thaw cycles.

Images



Rabbit Anti-TROVE2 Antibody
Paraffin Embedded Tissue: Human Stomach
Cellular Data: Epithelial cells of fundic gland
Antibody Concentration: 4.0-8.0 µg/ml
Magnification: 400X



WB Suggested Anti-TROVE2 Antibody Titration: 0.2-1 µg/ml
ELISA Titer: 1:312500
Positive Control: Jurkat cell lysate

Please note: All products are 'FOR RESEARCH USE ONLY. NOT FOR USE IN DIAGNOSTIC OR THERAPEUTIC PROCEDURES'.