

STAU1 antibody - N-terminal region

Rabbit Polyclonal Antibody

Catalog # AI11763

Product Information

Application	WB, IHC
Primary Accession	O95793
Other Accession	NM_017453 , NP_059347
Reactivity	Human, Mouse, Rat, Rabbit, Pig, Dog, Horse, Bovine
Predicted	Human, Rat, Rabbit, Horse, Bovine
Host	Rabbit
Clonality	Polyclonal
Calculated MW	63182

Additional Information

Gene ID	6780
Alias Symbol	STAU
Other Names	Double-stranded RNA-binding protein Staufen homolog 1, STAU1, STAU
Format	Liquid. Purified antibody supplied in 1x PBS buffer with 0.09% (w/v) sodium azide and 2% sucrose.
Reconstitution & Storage	Add 100 ul of distilled water. Final anti-STAU1 antibody concentration is 1 mg/ml in PBS buffer with 2% sucrose. For longer periods of storage, store at 20°C. Avoid repeat freeze-thaw cycles.
Precautions	STAU1 antibody - N-terminal region is for research use only and not for use in diagnostic or therapeutic procedures.

Protein Information

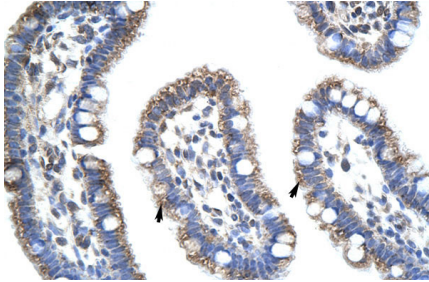
Name	STAU1
Synonyms	STAU
Function	Binds double-stranded RNA (regardless of the sequence) and tubulin. May play a role in specific positioning of mRNAs at given sites in the cell by cross-linking cytoskeletal and RNA components, and in stimulating their translation at the site.
Cellular Location	Cytoplasm. Rough endoplasmic reticulum. Note=Localizes exclusively with the rough endoplasmic reticulum (RER)
Tissue Location	Widely expressed. Expressed in brain, pancreas, heart, skeletal muscles, liver,

lung, kidney and placenta

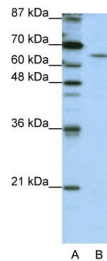
References

Kim,Y.K., (2005) Cell 120 (2), 195-208
Reconstitution and Storage: For short term use, store at 2-8C up to 1 week. For long term storage, store at -20C in small aliquots to prevent freeze-thaw cycles.

Images



Rabbit Anti-STAU1 Antibody
Paraffin Embedded Tissue: Human Intestine
Cellular Data: Epithelial cells of intestinal villas
Antibody Concentration: 4.0-8.0 µg/ml
Magnification: 400X



WB Suggested Anti-STAU1 Antibody Titration: 1.25µg/ml
ELISA Titer: 1:62500
Positive Control: HepG2 cell lysate

Please note: All products are 'FOR RESEARCH USE ONLY. NOT FOR USE IN DIAGNOSTIC OR THERAPEUTIC PROCEDURES'.