

# PRPF3 Antibody - C-terminal region

Rabbit Polyclonal Antibody

Catalog # AI11765

## Product Information

---

Application	WB
Primary Accession	<a href="#">O43395</a>
Other Accession	<a href="#">NP_004689</a>
Reactivity	Human
Predicted	Human, Mouse, Rat, Rabbit, Pig, Bovine
Host	Rabbit
Clonality	Polyclonal
Calculated MW	77529

## Additional Information

---

Gene ID	9129
Alias Symbol Other Names	PRPF3, HPRP3, PRP3, U4/U6 small nuclear ribonucleoprotein Prp3, Pre-mRNA-splicing factor 3, hPrp3, U4/U6 snRNP 90 kDa protein, PRPF3, HPRP3, PRP3
Format	Liquid. Purified antibody supplied in 1x PBS buffer with 0.09% (w/v) sodium azide and 2% sucrose.
Reconstitution & Storage	Add 50 $\mu$ l of distilled water. Final Anti-PRPF3 antibody concentration is 1 mg/ml in PBS buffer with 2% sucrose. For longer periods of storage, store at -20°C. Avoid repeat freeze-thaw cycles.
Precautions	PRPF3 Antibody - C-terminal region is for research use only and not for use in diagnostic or therapeutic procedures.

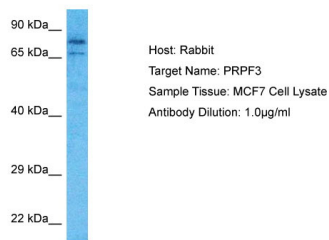
## Protein Information

---

Name	PRPF3
Synonyms	HPRP3 {ECO:0000303 PubMed:11773002}, PRP
Function	Plays a role in pre-mRNA splicing as component of the U4/U6- U5 tri-snRNP complex that is involved in spliceosome assembly, and as component of the precatalytic spliceosome (spliceosome B complex).
Cellular Location	Nucleus. Nucleus speckle
Tissue Location	Highly expressed in retina, liver, kidney and blood. Detected at lower levels in heart and brain

# Images

---



Host: Rabbit  
Target Name: PRPF3  
Sample Tissue: MCF7 Cell Lysate  
Antibody Dilution: 1.0µg/ml

Host: Rabbit  
Target Name: PRPF3  
Sample Tissue: MCF7 Whole Cell lysates  
Antibody Dilution: 1.0µg/ml

Please note: All products are 'FOR RESEARCH USE ONLY. NOT FOR USE IN DIAGNOSTIC OR THERAPEUTIC PROCEDURES'.