

PCBP2 antibody - N-terminal region

Rabbit Polyclonal Antibody

Catalog # AI11768

Product Information

Application	WB
Primary Accession	Q6IPF4
Other Accession	NM_005016 , NP_005007
Reactivity	Human, Mouse, Rat, Rabbit, Zebrafish, Pig, Dog, Horse, Bovine
Predicted	Human, Mouse, Rat, Rabbit, Zebrafish, Pig, Bovine
Host	Rabbit
Clonality	Polyclonal
Calculated MW	39 KDa

Additional Information

Alias Symbol	HNRPE2, MGC110998, hnRNP-E2
Format	Liquid. Purified antibody supplied in 1x PBS buffer with 0.09% (w/v) sodium azide and 2% sucrose.
Reconstitution & Storage	Add 100 ul of distilled water. Final anti-PCBP2 antibody concentration is 1 mg/ml in PBS buffer with 2% sucrose. For longer periods of storage, store at 20°C. Avoid repeat freeze-thaw cycles.
Precautions	PCBP2 antibody - N-terminal region is for research use only and not for use in diagnostic or therapeutic procedures.

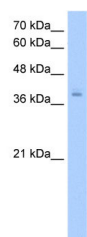
Protein Information

References

Fujimura, K., (2008) RNA 14 (3), 425-431 Reconstitution and Storage: For short term use, store at 2-8°C up to 1 week. For long term storage, store at -20°C in small aliquots to prevent freeze-thaw cycles.

Images

WB Suggested Anti-PCBP2 Antibody Titration: 2.5 µg/ml
Positive Control: HepG2 cell lysate
PCBP2 is supported by BioGPS gene expression data to be expressed in HepG2



Please note: All products are 'FOR RESEARCH USE ONLY. NOT FOR USE IN DIAGNOSTIC OR THERAPEUTIC PROCEDURES'.