

PCBP2 antibody - middle region

Rabbit Polyclonal Antibody

Catalog # AI11769

Product Information

Application	WB, IHC
Primary Accession	Q6IPF4
Other Accession	NM_005016 , NP_005007
Reactivity	Human, Mouse, Rat, Pig, Horse, Bovine
Predicted	Human, Mouse, Rat, Pig, Bovine
Host	Rabbit
Clonality	Polyclonal
Calculated MW	40 kDa

Additional Information

Alias Symbol	HNRPE2, hnRNP-E2
Format	Liquid. Purified antibody supplied in 1x PBS buffer with 0.09% (w/v) sodium azide and 2% sucrose.
Reconstitution & Storage	Add 100 ul of distilled water. Final anti-PCBP2 antibody concentration is 1 mg/ml in PBS buffer with 2% sucrose. For longer periods of storage, store at 20°C. Avoid repeat freeze-thaw cycles.
Precautions	PCBP2 antibody - middle region is for research use only and not for use in diagnostic or therapeutic procedures.

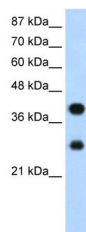
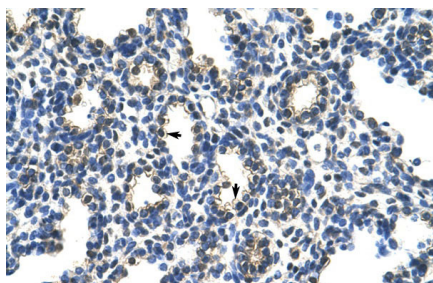
Protein Information

References

Oh, J.H., (2005) Mamm. Genome 16 (12), 942-954
Reconstitution and Storage: For short term use, store at 2-8°C up to 1 week. For long term storage, store at -20°C in small aliquots to prevent freeze-thaw cycles.
Publications: Han, W. et al. RNA-binding protein PCBP2 modulates glioma growth by regulating FHL3. J. Clin. Invest. 123, 2103-18 (2013). WB, IHC, Mouse, Human, Pig, H, Rat, Guinea pig, Bovine 23585479

Images

Rabbit Anti-PCBP2 Antibody
Paraffin Embedded Tissue: Human Lung
Cellular Data: Alveolar cells
Antibody Concentration: 4.0-8.0 µg/ml
Magnification: 400X



WB Suggested Anti-PCBP2 Antibody Titration: 1.25µg/ml
Positive Control: Jurkat cell lysate
There is BioGPS gene expression data showing that
PCBP2 is expressed in Jurkat

Please note: All products are 'FOR RESEARCH USE ONLY. NOT FOR USE IN DIAGNOSTIC OR THERAPEUTIC PROCEDURES'.