

Rod1 antibody - N-terminal region

Rabbit Polyclonal Antibody

Catalog # AI11771

Product Information

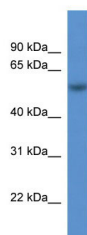
Application	WB
Primary Accession	Q8BHD7-2
Other Accession	NM_144904 , NP_659153
Reactivity	Human, Mouse, Rat, Rabbit, Zebrafish, Dog, Horse, Bovine
Predicted	Mouse, Rabbit, Pig, Horse, Bovine
Host	Rabbit
Clonality	Polyclonal
Calculated MW	56 kDa

Additional Information

Alias Symbol	5830471K22Rik, AA407443, AI462022, AW107884, C86549, MGC11742, Rod1
Format	Liquid. Purified antibody supplied in 1x PBS buffer with 0.09% (w/v) sodium azide and 2% sucrose.
Reconstitution & Storage	Add 50 ul of distilled water. Final anti-Rod1 antibody concentration is 1 mg/ml in PBS buffer with 2% sucrose. For longer periods of storage, store at 20°C. Avoid repeat freeze-thaw cycles.
Precautions	Rod1 antibody - N-terminal region is for research use only and not for use in diagnostic or therapeutic procedures.

Protein Information

Images



WB Suggested Anti-Rod1 Antibody Titration: 0.2-1 µg/ml
ELISA Titer: 1:12500
Positive Control: Mouse Liver