

# Snupn antibody - N-terminal region

Rabbit Polyclonal Antibody

Catalog # AI11772

## Product Information

---

<b>Application</b>	WB
<b>Primary Accession</b>	<a href="#">Q68FP5</a>
<b>Other Accession</b>	<a href="#">NM_001004270</a> , <a href="#">NP_001004270</a>
<b>Reactivity</b>	Human, Mouse, Rat, Rabbit, Zebrafish, Pig, Dog, Horse, Bovine
<b>Predicted</b>	Human, Rabbit, Zebrafish, Pig, Horse
<b>Host</b>	Rabbit
<b>Clonality</b>	Polyclonal
<b>Calculated MW</b>	40964

## Additional Information

---

<b>Gene ID</b>	316108
<b>Alias Symbol</b>	MGC95000, Rnut1
<b>Other Names</b>	Snurportin-1, RNA U transporter 1, Snupn, Rnut1
<b>Format</b>	Liquid. Purified antibody supplied in 1x PBS buffer with 0.09% (w/v) sodium azide and 2% sucrose.
<b>Reconstitution &amp; Storage</b>	Add 50 ul of distilled water. Final anti-Snupn antibody concentration is 1 mg/ml in PBS buffer with 2% sucrose. For longer periods of storage, store at 20°C. Avoid repeat freeze-thaw cycles.
<b>Precautions</b>	Snupn antibody - N-terminal region is for research use only and not for use in diagnostic or therapeutic procedures.

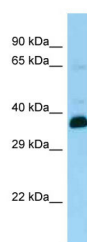
## Protein Information

---

<b>Name</b>	Snupn
<b>Synonyms</b>	Rnut1
<b>Function</b>	Functions as an U snRNP-specific nuclear import adapter. Involved in the trimethylguanosine (m3G)-cap-dependent nuclear import of U snRNPs. Binds specifically to the terminal m3G-cap U snRNAs.
<b>Cellular Location</b>	Nucleus {ECO:0000250 UniProtKB:O95149}. Cytoplasm {ECO:0000250 UniProtKB:O95149}. Note=Nucleoplasmic shuttling protein Its nuclear import involves the nucleocytoplasmic transport receptor importin beta. It is re-exported to the cytoplasm by the XPO1-dependent nuclear export receptor pathway. {ECO:0000250 UniProtKB:O95149}

## Images

---



WB Suggested Anti-Snupn Antibody Titration: 1.0 µg/ml  
Positive Control: Rat Brain

Please note: All products are 'FOR RESEARCH USE ONLY. NOT FOR USE IN DIAGNOSTIC OR THERAPEUTIC PROCEDURES'.