

# GIPC1 antibody - N-terminal region

Rabbit Polyclonal Antibody

Catalog # AI11773

## Product Information

---

<b>Application</b>	WB
<b>Primary Accession</b>	<a href="#">O14908</a>
<b>Other Accession</b>	<a href="#">NM_202470</a> , <a href="#">NP_974199</a>
<b>Reactivity</b>	Human, Mouse, Rat, Zebrafish, Dog, Bovine
<b>Predicted</b>	Human, Mouse, Rat, Zebrafish, Dog, Bovine
<b>Host</b>	Rabbit
<b>Clonality</b>	Polyclonal
<b>Calculated MW</b>	36049

## Additional Information

---

<b>Gene ID</b>	10755
<b>Alias Symbol</b>	NIP, GIPC, IIP-1, TIP-2, SEMCAP, C19orf3, Hs.6454, GLUT1CBP, RGS19IP1, SYNECTIN, SYNECTIIN
<b>Other Names</b>	PDZ domain-containing protein GIPC1, GAIP C-terminus-interacting protein, RGS-GAIP-interacting protein, RGS19-interacting protein 1, Synectin, Tax interaction protein 2, TIP-2, GIPC1, C19orf3, GIPC, RGS19IP1
<b>Format</b>	Liquid. Purified antibody supplied in 1x PBS buffer with 0.09% (w/v) sodium azide and 2% sucrose.
<b>Reconstitution &amp; Storage</b>	Add 50 ul of distilled water. Final anti-GIPC1 antibody concentration is 1 mg/ml in PBS buffer with 2% sucrose. For longer periods of storage, store at 20°C. Avoid repeat freeze-thaw cycles.
<b>Precautions</b>	GIPC1 antibody - N-terminal region is for research use only and not for use in diagnostic or therapeutic procedures.

## Protein Information

---

<b>Name</b>	GIPC1
<b>Synonyms</b>	C19orf3, GIPC, RGS19IP1
<b>Function</b>	May be involved in G protein-linked signaling.
<b>Cellular Location</b>	Cytoplasm. Membrane; Peripheral membrane protein
<b>Tissue Location</b>	Widely expressed (PubMed:9770488). Expressed in skeletal muscle (at protein level) (PubMed:32413282)

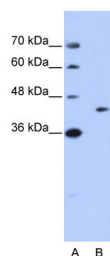
## References

---

Repetto,S., (2005) Biochem. Biophys. Res. Commun. 337 (3), 849-852  
Reconstitution and Storage:For short term use, store at 2-8C up to 1 week. For long term storage, store at -20C in small aliquots to prevent freeze-thaw cycles.

## Images

---



WB Suggested Anti-GIPC1 Antibody Titration: 0.2-1 µg/ml  
ELISA Titer: 1:62500  
Positive Control: Jurkat cell lysate

Please note: All products are 'FOR RESEARCH USE ONLY. NOT FOR USE IN DIAGNOSTIC OR THERAPEUTIC PROCEDURES'.