

SARS antibody - middle region

Rabbit Polyclonal Antibody

Catalog # AI11780

Product Information

Application	WB
Primary Accession	Q5T5C8
Other Accession	NM_006513 , NP_006504
Reactivity	Human, Mouse, Rat, Rabbit, Zebrafish, Dog, Horse, Bovine, Sheep
Predicted	Human, Mouse, Rabbit, Pig, Dog, Horse
Host	Rabbit
Clonality	Polyclonal
Calculated MW	57 KDa

Additional Information

Alias Symbol	SERS, SERRS
Format	Liquid. Purified antibody supplied in 1x PBS buffer with 0.09% (w/v) sodium azide and 2% sucrose.
Reconstitution & Storage	Add 100 ul of distilled water. Final anti-SARS antibody concentration is 1 mg/ml in PBS buffer with 2% sucrose. For longer periods of storage, store at 20°C. Avoid repeat freeze-thaw cycles.
Precautions	SARS antibody - middle region is for research use only and not for use in diagnostic or therapeutic procedures.

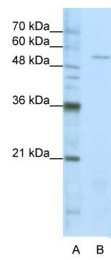
Protein Information

References

Shimada, N., (2001) J. Biol. Chem. 276 (50), 46770-46778
Reconstitution and Storage: For short term use, store at 2-8°C up to 1 week. For long term storage, store at -20°C in small aliquots to prevent freeze-thaw cycles.

Images

WB Suggested Anti-SARS Antibody Titration: 1.25 µg/ml
ELISA Titer: 1:62500
Positive Control: Jurkat cell lysate



Please note: All products are 'FOR RESEARCH USE ONLY. NOT FOR USE IN DIAGNOSTIC OR THERAPEUTIC PROCEDURES'.