

POP4 antibody - C-terminal region

Rabbit Polyclonal Antibody

Catalog # AI11783

Product Information

Application	WB, IHC
Primary Accession	O95707
Other Accession	NM_006627 , NP_006618
Reactivity	Human, Mouse, Rat, Rabbit, Zebrafish, Pig, Dog, Horse, Bovine, Yeast
Predicted	Human, Bovine
Host	Rabbit
Clonality	Polyclonal
Calculated MW	25425

Additional Information

Gene ID	10775
Alias Symbol	RPP29
Other Names	Ribonuclease P protein subunit p29, hPOP4, 3.1.26.5, POP4, RPP29
Format	Liquid. Purified antibody supplied in 1x PBS buffer with 0.09% (w/v) sodium azide and 2% sucrose.
Reconstitution & Storage	Add 100 ul of distilled water. Final anti-POP4 antibody concentration is 1 mg/ml in PBS buffer with 2% sucrose. For longer periods of storage, store at 20°C. Avoid repeat freeze-thaw cycles.
Precautions	POP4 antibody - C-terminal region is for research use only and not for use in diagnostic or therapeutic procedures.

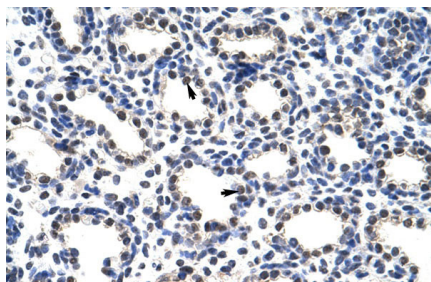
Protein Information

Name	POP4
Synonyms	RPP29
Function	Component of ribonuclease P, a ribonucleoprotein complex that generates mature tRNA molecules by cleaving their 5'-ends.
Cellular Location	Nucleus, nucleolus.

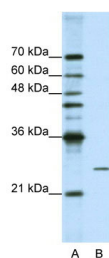
References

Welting,T.J., (2004) (er) Nucleic Acids Res. 32 (7), 2138-2146
Reconstitution and Storage:For short term use, store at 2-8C up to 1 week. For long term storage, store at -20C in small aliquots to prevent freeze-thaw cycles.

Images



Rabbit Anti-POP4 Antibody
Paraffin Embedded Tissue: Human Lung
Cellular Data: Alveolar cells
Antibody Concentration: 4.0-8.0 µg/ml
Magnification: 400X



WB Suggested Anti-POP4 Antibody Titration: 1.25µg/ml
ELISA Titer: 1:312500
Positive Control: HepG2 cell lysate

Please note: All products are 'FOR RESEARCH USE ONLY. NOT FOR USE IN DIAGNOSTIC OR THERAPEUTIC PROCEDURES'.