

Rbm15b antibody - C-terminal region

Rabbit Polyclonal Antibody

Catalog # AI11790

Product Information

Application	WB
Primary Accession	Q6PHZ5
Other Accession	NM_175402 , NP_780611
Reactivity	Human, Mouse, Rat, Rabbit, Pig, Dog, Bovine
Predicted	Human, Rat, Rabbit, Pig, Dog, Bovine
Host	Rabbit
Clonality	Polyclonal
Calculated MW	97076

Additional Information

Gene ID	109095
Alias Symbol	1810017N16Rik
Other Names	Putative RNA-binding protein 15B, RNA-binding motif protein 15B, Rbm15b
Format	Liquid. Purified antibody supplied in 1x PBS buffer with 0.09% (w/v) sodium azide and 2% sucrose.
Reconstitution & Storage	Add 50 ul of distilled water. Final anti-Rbm15b antibody concentration is 1 mg/ml in PBS buffer with 2% sucrose. For longer periods of storage, store at 20°C. Avoid repeat freeze-thaw cycles.
Precautions	Rbm15b antibody - C-terminal region is for research use only and not for use in diagnostic or therapeutic procedures.

Protein Information

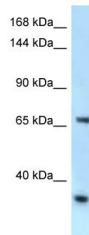
Name	Rbm15b
Function	RNA-binding protein that acts as a key regulator of N6- methyladenosine (m6A) methylation of RNAs, thereby regulating different processes, such as alternative splicing of mRNAs and X chromosome inactivation mediated by Xist RNA. Associated component of the WMM complex, a complex that mediates N6-methyladenosine (m6A) methylation of RNAs, a modification that plays a role in the efficiency of mRNA splicing and RNA processing. Plays a key role in m6A methylation, possibly by binding target RNAs and recruiting the WMM complex. Involved in random X inactivation mediated by Xist RNA: acts by binding Xist RNA and recruiting the WMM complex, which mediates m6A methylation, leading to target YTHDC1 reader on Xist RNA and promoting transcription repression activity of Xist. Functions in the regulation

of alternative or illicit splicing, possibly by regulating m6A methylation. Inhibits pre-mRNA splicing. Also functions as a mRNA export factor by acting as a cofactor for the nuclear export receptor NXF1.

Cellular Location

Nucleus, nucleoplasm {ECO:0000250|UniProtKB:Q8NDT2}. Nucleus speckle {ECO:0000250|UniProtKB:Q8NDT2}. Nucleus envelope {ECO:0000250|UniProtKB:Q8NDT2}. Note=Colocalizes with BMLF1 in the nucleus. Localized in the nucleoplasm with a granular staining pattern and excluded from the nucleoli. {ECO:0000250|UniProtKB:Q8NDT2}

Images



WB Suggested Anti-Rbm15b Antibody Titration: 1.0 µg/ml
Positive Control: Mouse Heart

Please note: All products are 'FOR RESEARCH USE ONLY. NOT FOR USE IN DIAGNOSTIC OR THERAPEUTIC PROCEDURES'.