

# Lsm7 antibody - N-terminal region

Rabbit Polyclonal Antibody  
Catalog # AI11802

## Product Information

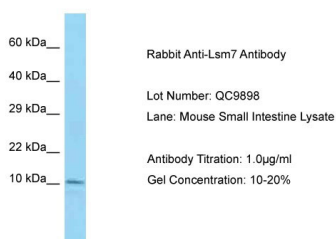
<b>Application</b>	WB
<b>Primary Accession</b>	<a href="#">Q9CQQ8</a>
<b>Other Accession</b>	<a href="#">NM_025349</a> , <a href="#">NP_079625</a>
<b>Reactivity</b>	Human, Mouse, Rat, Zebrafish, Pig, Dog, Bovine, Yeast
<b>Predicted</b>	Mouse, Rat, Zebrafish, Pig, Bovine
<b>Host</b>	Rabbit
<b>Clonality</b>	Polyclonal
<b>Calculated MW</b>	12 KDa

## Additional Information

<b>Alias Symbol</b>	0910001B06Rik, 1110033F18Rik
<b>Other Names</b>	U6 snRNA-associated Sm-like protein LSm7, Lsm7
<b>Format</b>	Liquid. Purified antibody supplied in 1x PBS buffer with 0.09% (w/v) sodium azide and 2% sucrose.
<b>Reconstitution &amp; Storage</b>	Add 50 ul of distilled water. Final anti-Lsm7 antibody concentration is 1 mg/ml in PBS buffer with 2% sucrose. For longer periods of storage, store at 20°C. Avoid repeat freeze-thaw cycles.
<b>Precautions</b>	Lsm7 antibody - N-terminal region is for research use only and not for use in diagnostic or therapeutic procedures.

## Protein Information

## Images



Host: Rabbit  
Target Name: Lsm7  
Sample Tissue: Mouse Small Intestine Lysate  
Antibody Dilution: 1.0µg/ml

Please note: All products are 'FOR RESEARCH USE ONLY. NOT FOR USE IN DIAGNOSTIC OR THERAPEUTIC PROCEDURES'.