

RBM38 antibody - N-terminal region

Rabbit Polyclonal Antibody

Catalog # AI11805

Product Information

Application	WB, IHC
Primary Accession	Q9H0Z9
Other Accession	NM_017495 , NP_059965
Reactivity	Human, Mouse, Rat, Zebrafish, Pig, Dog, Bovine
Predicted	Human, Mouse, Rat, Zebrafish, Pig, Chicken, Bovine
Host	Rabbit
Clonality	Polyclonal
Calculated MW	25498

Additional Information

Gene ID	55544
Alias Symbol	RNPC1, SEB4B, SEB4D, HSRNASEB, dj800J21.2
Other Names	RNA-binding protein 38, CLL-associated antigen KW-5, HSRNASEB, RNA-binding motif protein 38, RNA-binding region-containing protein 1, ssDNA-binding protein SEB4, RBM38, RNPC1, SEB4
Format	Liquid. Purified antibody supplied in 1x PBS buffer with 0.09% (w/v) sodium azide and 2% sucrose.
Reconstitution & Storage	Add 50 ul of distilled water. Final anti-RBM38 antibody concentration is 1 mg/ml in PBS buffer with 2% sucrose. For longer periods of storage, store at 20°C. Avoid repeat freeze-thaw cycles.
Precautions	RBM38 antibody - N-terminal region is for research use only and not for use in diagnostic or therapeutic procedures.

Protein Information

Name	RBM38
Synonyms	RNPC1, SEB4
Function	RNA-binding protein that specifically bind the 3'-UTR of CDKN1A transcripts, leading to maintain the stability of CDKN1A transcripts, thereby acting as a mediator of the p53/TP53 family to regulate CDKN1A. CDKN1A is a cyclin-dependent kinase inhibitor transcriptionally regulated by the p53/TP53 family to induce cell cycle arrest. Isoform 1, but not isoform 2, has the ability to induce cell cycle arrest in G1 and maintain the stability of CDKN1A transcripts induced by p53/TP53. Also acts as a mRNA splicing factor.

Specifically regulates the expression of FGFR2-IIIb, an epithelial cell-specific isoform of FGFR2. Plays a role in myogenic differentiation.

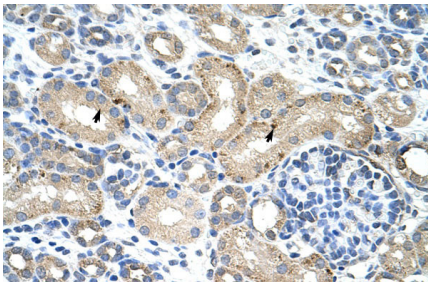
Cellular Location

Cytoplasm, cytosol. Nucleus

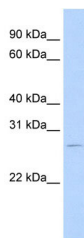
References

Strausberg, R.L., (2002) Proc. Natl. Acad. Sci. U.S.A. 99 (26), 16899-16903
Reconstitution and Storage: For short term use, store at 2-8°C up to 1 week. For long term storage, store at -20°C in small aliquots to prevent freeze-thaw cycles.

Images



Rabbit Anti-RBM38 Antibody
Paraffin Embedded Tissue: Human Kidney
Cellular Data: Epithelial cells of renal tubule
Antibody Concentration: 4.0-8.0 µg/ml
Magnification: 400X



WB Suggested Anti-RBM38 Antibody Titration: 0.2-1 µg/ml
Positive Control: RPMI 8226 cell lysate
RBM38 is supported by BioGPS gene expression data to be expressed in RPMI 8226

Please note: All products are 'FOR RESEARCH USE ONLY. NOT FOR USE IN DIAGNOSTIC OR THERAPEUTIC PROCEDURES'.