

CARF antibody - C-terminal region

Rabbit Polyclonal Antibody

Catalog # AI11807

Product Information

Application	WB, IHC
Primary Accession	Q9NXV6
Other Accession	NM_017632 , NP_060102
Reactivity	Human, Mouse, Rat, Rabbit, Pig, Dog, Horse, Bovine
Predicted	Human, Mouse, Rat
Host	Rabbit
Clonality	Polyclonal
Calculated MW	61125

Additional Information

Gene ID	55602
Alias Symbol	CARF
Other Names	CDKN2A-interacting protein, Collaborator of ARF, CDKN2AIP, CARF
Format	Liquid. Purified antibody supplied in 1x PBS buffer with 0.09% (w/v) sodium azide and 2% sucrose.
Reconstitution & Storage	Add 100 ul of distilled water. Final anti-CARF antibody concentration is 1 mg/ml in PBS buffer with 2% sucrose. For longer periods of storage, store at 20°C. Avoid repeat freeze-thaw cycles.
Precautions	CARF antibody - C-terminal region is for research use only and not for use in diagnostic or therapeutic procedures.

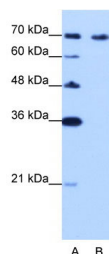
Protein Information

Name	CDKN2AIP
Synonyms	CARF
Function	Regulates DNA damage response in a dose-dependent manner through a number of signaling pathways involved in cell proliferation, apoptosis and senescence.
Cellular Location	Nucleus, nucleoplasm
Tissue Location	Ubiquitously expressed.

References

Hasan,M.K., (2002) J. Biol. Chem. 277 (40), 37765-37770
Reconstitution and Storage:For short term use, store at 2-8C up to 1 week. For long term storage, store at -20C in small aliquots to prevent freeze-thaw cycles.

Images



WB Suggested Anti-CARF Antibody Titration: 0.3125µg/ml
Positive Control: Jurkat cell lysate
CDKN2AIP is supported by BioGPS gene expression data to be expressed in Jurkat

Please note: All products are 'FOR RESEARCH USE ONLY. NOT FOR USE IN DIAGNOSTIC OR THERAPEUTIC PROCEDURES'.