

KLHDC8A antibody - C-terminal region

Rabbit Polyclonal Antibody

Catalog # AI11813

Product Information

Application	WB, IHC
Primary Accession	Q8IYD2
Other Accession	NM_018203 , NP_060673
Reactivity	Human, Mouse, Rat, Rabbit, Dog, Horse, Bovine
Predicted	Human, Mouse, Rat, Rabbit, Chicken, Dog, Horse, Bovine
Host	Rabbit
Clonality	Polyclonal
Calculated MW	38859

Additional Information

Gene ID	55220
Other Names	Kelch domain-containing protein 8A, Substitute for delta-EGFR expression 1, S-delta-E1, KLHDC8A
Format	Liquid. Purified antibody supplied in 1x PBS buffer with 0.09% (w/v) sodium azide and 2% sucrose.
Reconstitution & Storage	Add 100 ul of distilled water. Final anti-KLHDC8A antibody concentration is 1 mg/ml in PBS buffer with 2% sucrose. For longer periods of storage, store at 20°C. Avoid repeat freeze-thaw cycles.
Precautions	KLHDC8A antibody - C-terminal region is for research use only and not for use in diagnostic or therapeutic procedures.

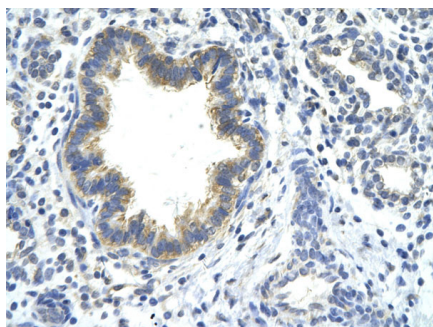
Protein Information

Name	KLHDC8A
-------------	---------

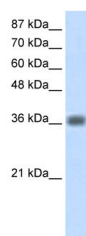
References

Ota,T., (2004) Nat. Genet. 36 (1), 40-45
Reconstitution and Storage: For short term use, store at 2-8C up to 1 week. For long term storage, store at -20C in small aliquots to prevent freeze-thaw cycles.

Images



Paraffin Embedded Tissue: Human Lung cell
Cellular Data: bronchiole epithelium
Antibody Concentration: 4.0-8.0 $\mu\text{g/ml}$
Magnification: 400X



WB Suggested Anti-KLHDC8A Antibody Titration:
1.25 $\mu\text{g/ml}$
Positive Control: Jurkat cell lysate

Please note: All products are 'FOR RESEARCH USE ONLY. NOT FOR USE IN DIAGNOSTIC OR THERAPEUTIC PROCEDURES'.