

ADARB2 antibody - middle region

Rabbit Polyclonal Antibody

Catalog # AI11815

Product Information

Application	WB
Primary Accession	Q9NS39
Other Accession	NM_018702 , NP_061172
Reactivity	Human, Mouse, Rat, Rabbit, Zebrafish, Pig, Dog, Horse, Bovine
Predicted	Human, Mouse, Rat, Rabbit, Chicken, Bovine
Host	Rabbit
Clonality	Polyclonal
Calculated MW	80621

Additional Information

Gene ID	105
Alias Symbol	ADAR3, FLJ25034, FLJ36975, RED2, hRED2
Other Names	Double-stranded RNA-specific editase B2, 3.5.-., RNA-dependent adenosine deaminase 3, RNA-editing deaminase 2, RNA-editing enzyme 2, dsRNA adenosine deaminase B2, ADARB2, ADAR3, RED2
Format	Liquid. Purified antibody supplied in 1x PBS buffer with 0.09% (w/v) sodium azide and 2% sucrose.
Reconstitution & Storage	Add 50 ul of distilled water. Final anti-ADARB2 antibody concentration is 1 mg/ml in PBS buffer with 2% sucrose. For longer periods of storage, store at 20°C. Avoid repeat freeze-thaw cycles.
Precautions	ADARB2 antibody - middle region is for research use only and not for use in diagnostic or therapeutic procedures.

Protein Information

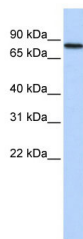
Name	ADARB2
Synonyms	ADAR3, RED2
Function	Lacks editing activity. It prevents the binding of other ADAR enzymes to targets in vitro, and decreases the efficiency of these enzymes. Capable of binding to dsRNA but also to ssRNA.
Cellular Location	Nucleus.
Tissue Location	Brain specific. Expressed at higher levels in astrocytomas as compared to the

normal brain tissue

References

Andersen,J.S., (2005) Nature 433 (7021), 77-83 Reconstitution and Storage:For short term use, store at 2-8C up to 1 week. For long term storage, store at -20C in small aliquots to prevent freeze-thaw cycles.

Images



WB Suggested Anti-ADARB2 Antibody Titration: 0.2-1
µg/ml
ELISA Titer: 1:312500
Positive Control: Human heart

Please note: All products are 'FOR RESEARCH USE ONLY. NOT FOR USE IN DIAGNOSTIC OR THERAPEUTIC PROCEDURES'.