

MATR3 antibody - N-terminal region

Rabbit Polyclonal Antibody

Catalog # AI11817

Product Information

Application	WB, IHC
Primary Accession	P43243
Other Accession	NM_018834 , NP_061322
Reactivity	Human, Mouse, Rat, Rabbit, Pig, Dog, Horse, Bovine
Predicted	Human, Mouse, Rat, Rabbit, Chicken, Bovine
Host	Rabbit
Clonality	Polyclonal
Calculated MW	94623

Additional Information

Gene ID	9782
Alias Symbol	MPD2, VCPDM
Other Names	Matrin-3, MATR3, KIAA0723
Format	Liquid. Purified antibody supplied in 1x PBS buffer with 0.09% (w/v) sodium azide and 2% sucrose.
Reconstitution & Storage	Add 100 ul of distilled water. Final anti-MATR3 antibody concentration is 1 mg/ml in PBS buffer with 2% sucrose. For longer periods of storage, store at 20°C. Avoid repeat freeze-thaw cycles.
Precautions	MATR3 antibody - N-terminal region is for research use only and not for use in diagnostic or therapeutic procedures.

Protein Information

Name	MATR3
Synonyms	KIAA0723
Function	May play a role in transcription or may interact with other nuclear matrix proteins to form the internal fibrogranular network. In association with the SFPQ-NONO heteromer may play a role in nuclear retention of defective RNAs. Plays a role in the regulation of DNA virus-mediated innate immune response by assembling into the HDP-RNP complex, a complex that serves as a platform for IRF3 phosphorylation and subsequent innate immune response activation through the cGAS-STING pathway (PubMed: 28712728). Binds to N6-methyladenosine (m6A)-containing mRNAs and contributes to MYC stability by binding to m6A-containing MYC mRNAs (PubMed: 32245947).

May bind to specific miRNA hairpins (PubMed:[28431233](#)).

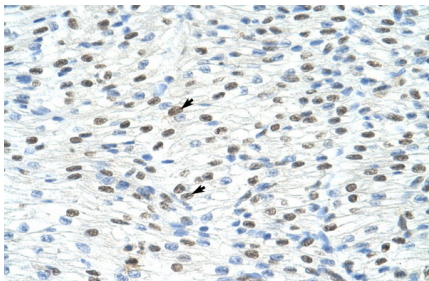
Cellular Location

Nucleus matrix.

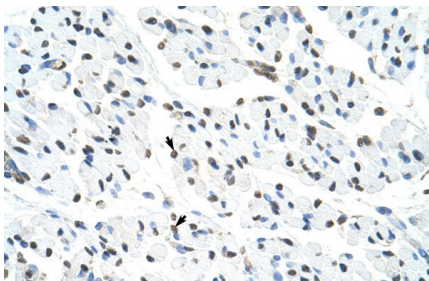
References

Beausoleil, S.A., (2004) Proc. Natl. Acad. Sci. U.S.A. 101 (33), 12130-12135
Reconstitution and Storage: For short term use, store at 2-8°C up to 1 week. For long term storage, store at -20°C in small aliquots to prevent freeze-thaw cycles.
Publications: Valencia, C. A., Ju, W. & Liu, R. Matrin 3 is a Ca²⁺/calmodulin-binding protein cleaved by caspases. Biochem. Biophys. Res. Commun. 361, 281-6 (2007). WB, Human, Bovine, Rat, Dog, Pig, H, Rabbit, Guinea pig, Mouse
17658460 Kula, A. et al. Characterization of the HIV-1 RNA associated proteome identifies Matrin 3 as a nuclear cofactor of Rev function. Retrovirology 8, 60 (2011). WB, Human, Bovine, Rat, Dog, Pig, H, Rabbit, Guinea pig, Mouse
21771346 Kula, A., Gharu, L. & Marcello, A. HIV-1 pre-mRNA commitment to Rev mediated export through PSF and Matrin 3. Virology 435, 329-40 (2013). WB, Human, Bovine, Rat, Dog, Pig, H, Rabbit, Guinea pig, Mouse
23158102

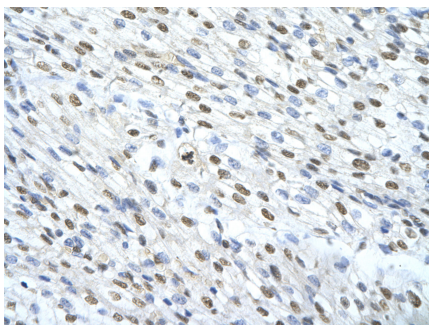
Images



Rabbit Anti-MATR3 Antibody
Paraffin Embedded Tissue: Human Heart
Cellular Data: Myocardial cells
Antibody Concentration: 4.0-8.0 µg/ml
Magnification: 400X



Rabbit Anti-MATR3 Antibody
Paraffin Embedded Tissue: Human Muscle
Cellular Data: Skeletal muscle cells
Antibody Concentration: 4.0-8.0 µg/ml
Magnification: 400X



Rabbit Anti-MATR3 Antibody
Paraffin Embedded Tissue: Human cardiac cell
Cellular Data: Epithelial cells of renal tubule
Antibody Concentration: 4.0-8.0 µg/ml
Magnification: 400X



WB Suggested Anti-MATR3 Antibody Titration: 1.25 µg/ml
Positive Control: Jurkat cell lysate
MATR3 is strongly supported by BioGPS gene expression data to be expressed in Human Jurkat cells

Please note: All products are 'FOR RESEARCH USE ONLY. NOT FOR USE IN DIAGNOSTIC OR THERAPEUTIC PROCEDURES'.