

PAPOLB antibody - N-terminal region

Rabbit Polyclonal Antibody

Catalog # AI11819

Product Information

Application	WB
Primary Accession	A4D1Z6
Other Accession	NM_020144 , NP_064529
Reactivity	Human, Mouse, Rat, Rabbit, Zebrafish, Pig, Dog, Horse, Bovine
Predicted	Human, Mouse, Rat, Rabbit, Zebrafish, Dog
Host	Rabbit
Clonality	Polyclonal
Calculated MW	72 KDa

Additional Information

Alias Symbol	PAPT, TPAP
Format	Liquid. Purified antibody supplied in 1x PBS buffer with 0.09% (w/v) sodium azide and 2% sucrose.
Reconstitution & Storage	Add 50 ul of distilled water. Final anti-PAPOLB antibody concentration is 1 mg/ml in PBS buffer with 2% sucrose. For longer periods of storage, store at 20°C. Avoid repeat freeze-thaw cycles.
Precautions	PAPOLB antibody - N-terminal region is for research use only and not for use in diagnostic or therapeutic procedures.

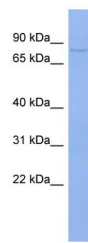
Protein Information

References

Le,Y.J., (2001) Mol. Cells 11 (3), 379-385 Reconstitution and Storage:For short term use, store at 2-8C up to 1 week. For long term storage, store at -20C in small aliquots to prevent freeze-thaw cycles.

Images

WB Suggested Anti-PAPOLB Antibody Titration: 0.2-1
µg/ml
ELISA Titer: 1:312500
Positive Control: OVCAR-3 cell lysate
PAPOLB is supported by BioGPS gene expression data to
be expressed in OVCAR3



Please note: All products are 'FOR RESEARCH USE ONLY. NOT FOR USE IN DIAGNOSTIC OR THERAPEUTIC PROCEDURES'.