

PCBP3 antibody - middle region

Rabbit Polyclonal Antibody

Catalog # AI11825

Product Information

Application	WB
Primary Accession	P57721
Other Accession	NM_020528 , NP_065389
Reactivity	Human, Mouse, Rat, Rabbit, Zebrafish, Dog, Horse, Bovine
Predicted	Human, Mouse, Rat, Rabbit, Zebrafish, Bovine
Host	Rabbit
Clonality	Polyclonal
Calculated MW	39465

Additional Information

Gene ID	54039
Alias Symbol	ALPHA-CP3
Other Names	Poly(rC)-binding protein 3, Alpha-CP3, PCBP3
Format	Liquid. Purified antibody supplied in 1x PBS buffer with 0.09% (w/v) sodium azide and 2% sucrose.
Reconstitution & Storage	Add 50 ul of distilled water. Final anti-PCBP3 antibody concentration is 1 mg/ml in PBS buffer with 2% sucrose. For longer periods of storage, store at 20°C. Avoid repeat freeze-thaw cycles.
Precautions	PCBP3 antibody - middle region is for research use only and not for use in diagnostic or therapeutic procedures.

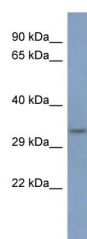
Protein Information

Name	PCBP3 (HGNC:8651)
Function	Single-stranded nucleic acid binding protein that binds preferentially to oligo dC.
Cellular Location	Cytoplasm.

References

Lim,J., (2006) Cell 125 (4), 801-814 Reconstitution and Storage:For short term use, store at 2-8C up to 1 week. For long term storage, store at -20C in small aliquots to prevent freeze-thaw cycles.

Images



WB Suggested Anti-PCBP3 Antibody Titration: 0.2-1 µg/ml
ELISA Titer: 1:312500
Positive Control: HT1080 cell lysate

Please note: All products are 'FOR RESEARCH USE ONLY. NOT FOR USE IN DIAGNOSTIC OR THERAPEUTIC PROCEDURES'.