

# TNRC6A antibody - N-terminal region

Rabbit Polyclonal Antibody

Catalog # AI11827

## Product Information

---

<b>Application</b>	WB
<b>Primary Accession</b>	<a href="#">Q8NDV7</a>
<b>Other Accession</b>	<a href="#">NM_014494</a> , <a href="#">NP_055309</a>
<b>Reactivity</b>	Human, Mouse, Dog, Horse
<b>Predicted</b>	Mouse, Rat, Chicken, Dog, Horse
<b>Host</b>	Rabbit
<b>Clonality</b>	Polyclonal
<b>Calculated MW</b>	210297

## Additional Information

---

<b>Gene ID</b>	27327
<b>Alias Symbol</b>	CAGH26, DKFZp666E117, FLJ22043, GW1, GW182, KIAA1460, MGC75384, TNRC6
<b>Other Names</b>	Trinucleotide repeat-containing gene 6A protein, CAG repeat protein 26, EMSY interactor protein, GW182 autoantigen, Protein GW1, Glycine-tryptophan protein of 182 kDa, TNRC6A, CAGH26, KIAA1460, TNRC6
<b>Format</b>	Liquid. Purified antibody supplied in 1x PBS buffer with 0.09% (w/v) sodium azide and 2% sucrose.
<b>Reconstitution &amp; Storage</b>	Add 50 ul of distilled water. Final anti-TNRC6A antibody concentration is 1 mg/ml in PBS buffer with 2% sucrose. For longer periods of storage, store at 20°C. Avoid repeat freeze-thaw cycles.
<b>Precautions</b>	TNRC6A antibody - N-terminal region is for research use only and not for use in diagnostic or therapeutic procedures.

## Protein Information

---

<b>Name</b>	TNRC6A
<b>Synonyms</b>	CAGH26, KIAA1460, TNRC6
<b>Function</b>	Plays a role in RNA-mediated gene silencing by both micro- RNAs (miRNAs) and short interfering RNAs (siRNAs). Required for miRNA- dependent repression of translation and for siRNA-dependent endonucleolytic cleavage of complementary mRNAs by argonaute family proteins. As a scaffolding protein, associates with argonaute proteins bound to partially complementary mRNAs, and can simultaneously recruit CCR4-NOT and PAN deadenylase

complexes.

**Cellular Location**

Cytoplasm, P-body Note=Mammalian P-bodies are also known as GW bodies (GWBs)

**Tissue Location**

Ubiquitous.

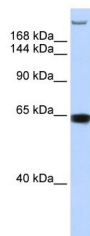
## References

---

Eulalio,A., (2008) Nat. Struct. Mol. Biol. 15 (4), 346-353 Reconstitution and Storage:For short term use, store at 2-8C up to 1 week. For long term storage, store at -20C in small aliquots to prevent freeze-thaw cycles.Publications:Bukong, T. N., Hou, W., Kodys, K. & Szabo, G. Ethanol facilitates hepatitis C virus replication via up-regulation of GW182 and heat shock protein 90 in human hepatoma cells. Hepatology 57, 70-80 (2013). WB, H, Mouse, Human, Dog22898980

## Images

---



WB Suggested Anti-TNRC6A Antibody Titration: 0.2-1  
µg/ml  
ELISA Titer: 1:62500  
Positive Control: MCF7 cell lysate

Please note: All products are 'FOR RESEARCH USE ONLY. NOT FOR USE IN DIAGNOSTIC OR THERAPEUTIC PROCEDURES'.