

PTBP2 antibody - N-terminal region

Rabbit Polyclonal Antibody

Catalog # AI11830

Product Information

Application	WB
Primary Accession	Q9UKA9-5
Other Accession	NM_021190 , BAB71743
Reactivity	Human, Mouse, Rat, Rabbit, Zebrafish, Dog, Bovine
Predicted	Mouse, Rat, Rabbit, Bovine
Host	Rabbit
Clonality	Polyclonal
Calculated MW	40 KDa

Additional Information

Alias Symbol	PTB, nPTB, PTBLP, brPTB, nPTB5, nPTB6, nPTB7, nPTB8
Format	Liquid. Purified antibody supplied in 1x PBS buffer with 0.09% (w/v) sodium azide and 2% sucrose.
Reconstitution & Storage	Add 100 ul of distilled water. Final anti-PTBP2 antibody concentration is 1 mg/ml in PBS buffer with 2% sucrose. For longer periods of storage, store at 20°C. Avoid repeat freeze-thaw cycles.
Precautions	PTBP2 antibody - N-terminal region is for research use only and not for use in diagnostic or therapeutic procedures.

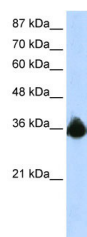
Protein Information

References

Tateiwa, H., (2001) J. Neuroimmunol. 120 (1-2), 161-169
Reconstitution and Storage: For short term use, store at 2-8°C up to 1 week. For long term storage, store at -20°C in small aliquots to prevent freeze-thaw cycles.

Images

WB Suggested Anti-PTBP2 Antibody Titration: 1.25 µg/ml
Positive Control: HepG2 cell lysate



Please note: All products are 'FOR RESEARCH USE ONLY. NOT FOR USE IN DIAGNOSTIC OR THERAPEUTIC PROCEDURES'.