

PTBP2 antibody - N-terminal region

Rabbit Polyclonal Antibody

Catalog # AI11831

Product Information

| | |
|--------------------------|--|
| Application | WB |
| Primary Accession | Q9UKA9 |
| Other Accession | NM_021190 , NP_067013 |
| Reactivity | Human, Mouse, Rat, Rabbit, Zebrafish, Dog, Horse, Bovine |
| Predicted | Human, Mouse, Rat, Rabbit, Zebrafish, Chicken, Bovine |
| Host | Rabbit |
| Clonality | Polyclonal |
| Calculated MW | 57491 |

Additional Information

| | |
|---|---|
| Gene ID | 58155 |
| Alias Symbol Other Names | FLJ34897, MIBP, PTB, PTBLP, brPTB, nPTB, nPTB5, nPTB6, nPTB7, nPTB8 Polypyrimidine tract-binding protein 2, Neural polypyrimidine tract-binding protein, Neurally-enriched homolog of PTB, PTB-like protein, PTBP2, NPTB, PTB, PTBLP |
| Format | Liquid. Purified antibody supplied in 1x PBS buffer with 0.09% (w/v) sodium azide and 2% sucrose. |
| Reconstitution & Storage | Add 50 ul of distilled water. Final anti-PTBP2 antibody concentration is 1 mg/ml in PBS buffer with 2% sucrose. For longer periods of storage, store at 20°C. Avoid repeat freeze-thaw cycles. |
| Precautions | PTBP2 antibody - N-terminal region is for research use only and not for use in diagnostic or therapeutic procedures. |

Protein Information

| | |
|--------------------------|---|
| Name | PTBP2 (HGNC:17662) |
| Synonyms | NPTB, PTB, PTBLP |
| Function | RNA-binding protein which binds to intronic polypyrimidine tracts and mediates negative regulation of exons splicing. May antagonize in a tissue-specific manner the ability of NOVA1 to activate exon selection. In addition to its function in pre-mRNA splicing, plays also a role in the regulation of translation. |
| Cellular Location | Nucleus {ECO:0000250 UniProtKB:Q91Z31}. |

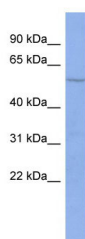
Tissue Location

Mainly expressed in brain although also detected in other tissues like heart and skeletal muscle. Isoform 1 and isoform 2 are specifically expressed in neuronal tissues. Isoform 3 and isoform 4 are expressed in non-neuronal tissues. Isoform 5 and isoform 6 are truncated forms expressed in non-neuronal tissues

References

Galban,S., (2008) Mol. Cell. Biol. 28 (1), 93-107 Reconstitution and Storage:For short term use, store at 2-8C up to 1 week. For long term storage, store at -20C in small aliquots to prevent freeze-thaw cycles.

Images



WB Suggested Anti-PTBP2 Antibody Titration: 0.2-1 µg/ml
ELISA Titer: 1:62500
Positive Control: PANC1 cell lysate

Please note: All products are 'FOR RESEARCH USE ONLY. NOT FOR USE IN DIAGNOSTIC OR THERAPEUTIC PROCEDURES'.