

# Rbm25 antibody - middle region

Rabbit Polyclonal Antibody

Catalog # AI11832

## Product Information

Application	WB
Primary Accession	<a href="#">B2RY56</a>
Other Accession	<a href="#">NM_027349</a> , <a href="#">NP_081625</a>
Reactivity	Human, Mouse, Rat, Rabbit, Zebrafish, Dog, Horse, Bovine, Yeast
Predicted	Human, Mouse, Rabbit, Zebrafish, Chicken, Dog, Horse, Bovine
Host	Rabbit
Clonality	Polyclonal
Calculated MW	99552

## Additional Information

Gene ID	67039
Alias Symbol	2600011C06Rik, 2610015J01Rik, A130095G20Rik, AI159652, AL023075, AU043498, RNPC7
Other Names	RNA-binding protein 25, RNA-binding motif protein 25, Rbm25
Format	Liquid. Purified antibody supplied in 1x PBS buffer with 0.09% (w/v) sodium azide and 2% sucrose.
Reconstitution & Storage	Add 50 ul of distilled water. Final anti-Rbm25 antibody concentration is 1 mg/ml in PBS buffer with 2% sucrose. For longer periods of storage, store at 20°C. Avoid repeat freeze-thaw cycles.
Precautions	Rbm25 antibody - middle region is for research use only and not for use in diagnostic or therapeutic procedures.

## Protein Information

Name	Rbm25
Function	RNA-binding protein that acts as a regulator of alternative pre-mRNA splicing. Involved in apoptotic cell death through the regulation of the apoptotic factor BCL2L1 isoform expression. Modulates the ratio of proapoptotic BCL2L1 isoform S to antiapoptotic BCL2L1 isoform L mRNA expression. When overexpressed, stimulates proapoptotic BCL2L1 isoform S 5'-splice site (5'-ss) selection, whereas its depletion caused the accumulation of antiapoptotic BCL2L1 isoform L. Promotes BCL2L1 isoform S 5'-ss usage through the 5'-CGGGCA-3' RNA sequence. Its association with LUC7L3 promotes U1 snRNP binding to a weak 5' ss in a 5'-CGGGCA-3'-dependent manner. Binds to the exonic splicing enhancer 5'-CGGGCA-3' RNA sequence

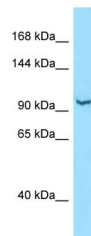
located within exon 2 of the BCL2L1 pre-mRNA (By similarity).

## Cellular Location

Nucleus speckle {ECO:0000255|PROSITE- ProRule:PRU00627}. Cytoplasm.  
Note=Colocalizes predominantly, with SFRS2 and LUC7L3 splicing factors, in nuclear speckles. Cytoplasmic localization is faint (By similarity)

## Images

---



WB Suggested Anti-Rbm25 Antibody Titration: 1.0 µg/ml  
Positive Control: Mouse Liver

Please note: All products are 'FOR RESEARCH USE ONLY. NOT FOR USE IN DIAGNOSTIC OR THERAPEUTIC PROCEDURES'.