

# WBSCR1 antibody - middle region

Rabbit Polyclonal Antibody

Catalog # AI11833

## Product Information

---

<b>Application</b>	WB, IHC
<b>Primary Accession</b>	<a href="#">Q15056</a>
<b>Other Accession</b>	<a href="#">NM_022170</a> , <a href="#">NP_071496</a>
<b>Reactivity</b>	Human, Mouse, Rat, Pig, Dog, Horse
<b>Predicted</b>	Human, Mouse, Rat, Chicken, Dog
<b>Host</b>	Rabbit
<b>Clonality</b>	Polyclonal
<b>Calculated MW</b>	27385

## Additional Information

---

<b>Gene ID</b>	7458
<b>Alias Symbol</b> <b>Other Names</b>	WSCR1, WBSCR1, eIF-4H Eukaryotic translation initiation factor 4H, eIF-4H, Williams-Beuren syndrome chromosomal region 1 protein, EIF4H, KIAA0038, WBSCR1, WSCR1
<b>Format</b>	Liquid. Purified antibody supplied in 1x PBS buffer with 0.09% (w/v) sodium azide and 2% sucrose.
<b>Reconstitution &amp; Storage</b>	Add 100 ul of distilled water. Final anti-WBSCR1 antibody concentration is 1 mg/ml in PBS buffer with 2% sucrose. For longer periods of storage, store at 20°C. Avoid repeat freeze-thaw cycles.
<b>Precautions</b>	WBSCR1 antibody - middle region is for research use only and not for use in diagnostic or therapeutic procedures.

## Protein Information

---

<b>Name</b>	EIF4H
<b>Synonyms</b>	KIAA0038, WBSCR1, WSCR1
<b>Function</b>	Stimulates the RNA helicase activity of EIF4A in the translation initiation complex. Binds weakly mRNA.
<b>Cellular Location</b>	Cytoplasm, perinuclear region.
<b>Tissue Location</b>	The short isoform is the predominant isoform and is expressed alone in liver and skeletal muscle. Both isoforms are expressed in fibroblast, spleen, testis and bone marrow. Levels are high in lung and pancreas and low in heart,

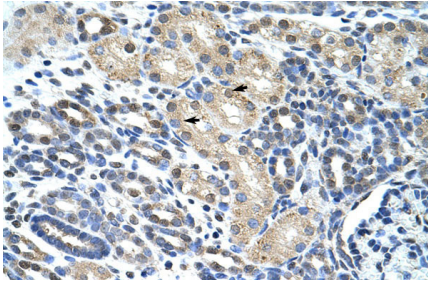
## References

---

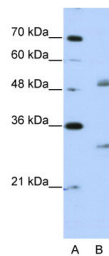
Doecker, R.C., (2004) J. Virol. 78 (9), 4684-4699 Reconstitution and Storage: For short term use, store at 2-8°C up to 1 week. For long term storage, store at -20°C in small aliquots to prevent freeze-thaw cycles.

## Images

---



Rabbit Anti-WBSCR1 Antibody  
Paraffin Embedded Tissue: Human Kidney  
Cellular Data: Epithelial cells of renal tubule  
Antibody Concentration: 4.0-8.0 µg/ml  
Magnification: 400X



WB Suggested Anti-WBSCR1 Antibody Titration: 2.5 µg/ml  
Positive Control: Jurkat cell lysate  
EIF4H is supported by BioGPS gene expression data to be expressed in Jurkat

Please note: All products are 'FOR RESEARCH USE ONLY. NOT FOR USE IN DIAGNOSTIC OR THERAPEUTIC PROCEDURES'.