

mrpl24 Antibody - C-terminal region

Rabbit Polyclonal Antibody

Catalog # AI11836

Product Information

Application	WB
Primary Accession	Q66H47
Other Accession	NM_001007637 , NP_001007638
Reactivity	Human, Mouse, Rat, Rabbit, Zebrafish, Pig, Dog, Horse, Bovine
Predicted	Human, Mouse, Rat, Pig, Dog, Horse, Bovine
Host	Rabbit
Clonality	Polyclonal
Calculated MW	25001

Additional Information

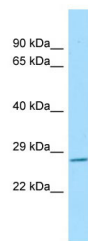
Gene ID	295224
Alias Symbol	MGC94307
Other Names	39S ribosomal protein L24, mitochondrial, L24mt, MRP-L24, Mrpl24
Format	Liquid. Purified antibody supplied in 1x PBS buffer with 0.09% (w/v) sodium azide and 2% sucrose.
Reconstitution & Storage	Add 50 ul of distilled water. Final anti-mrpl24 antibody concentration is 1 mg/ml in PBS buffer with 2% sucrose. For longer periods of storage, store at 20°C. Avoid repeat freeze-thaw cycles.
Precautions	mrpl24 Antibody - C-terminal region is for research use only and not for use in diagnostic or therapeutic procedures.

Protein Information

Name	Mrpl24
Cellular Location	Mitochondrion {ECO:0000250 UniProtKB:Q96A35}.

Images

Host: Rabbit
Target Name: mrpl24
Sample Tissue: Rat Spleen lysates
Antibody Dilution: 1.0µg/ml



Please note: All products are 'FOR RESEARCH USE ONLY. NOT FOR USE IN DIAGNOSTIC OR THERAPEUTIC PROCEDURES'.