

MSI2 antibody - N-terminal region

Rabbit Polyclonal Antibody

Catalog # AI11844

Product Information

Application	WB, IHC
Primary Accession	Q96DH6
Other Accession	NM_138962 , NP_620412
Reactivity	Human, Mouse, Rat, Rabbit, Zebrafish, Pig, Dog, Horse, Bovine
Predicted	Human, Mouse, Rabbit, Zebrafish, Horse
Host	Rabbit
Clonality	Polyclonal
Calculated MW	35197

Additional Information

Gene ID	124540
Alias Symbol	MSI2H
Other Names	RNA-binding protein Musashi homolog 2, Musashi-2, MSI2
Format	Liquid. Purified antibody supplied in 1x PBS buffer with 0.09% (w/v) sodium azide and 2% sucrose.
Reconstitution & Storage	Add 100 ul of distilled water. Final anti-MSI2 antibody concentration is 1 mg/ml in PBS buffer with 2% sucrose. For longer periods of storage, store at 20°C. Avoid repeat freeze-thaw cycles.
Precautions	MSI2 antibody - N-terminal region is for research use only and not for use in diagnostic or therapeutic procedures.

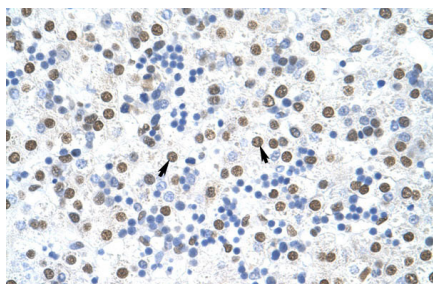
Protein Information

Name	MSI2
Function	RNA binding protein that regulates the expression of target mRNAs at the translation level. May play a role in the proliferation and maintenance of stem cells in the central nervous system (By similarity).
Cellular Location	Cytoplasm. Note=Associated with polysomes.
Tissue Location	Ubiquitous; detected at low levels.

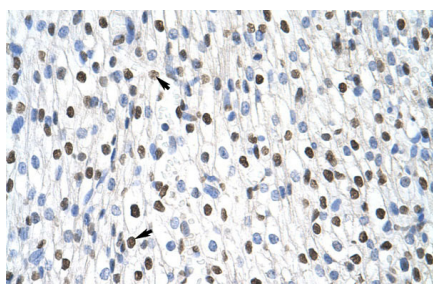
References

Barbouti,A., (2003) Cancer Res. 63 (6), 1202-1206
Reconstitution and Storage:For short term use, store at 2-8C up to 1 week. For long term storage, store at -20C in small aliquots to prevent freeze-thaw cycles.

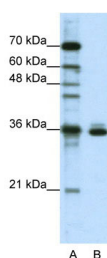
Images



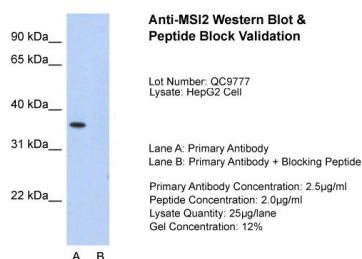
Rabbit Anti-MSI2 Antibody
Paraffin Embedded Tissue: Human Liver
Cellular Data: Hepatocytes
Antibody Concentration: 4.0-8.0 µg/ml
Magnification: 400X



Rabbit Anti-MSI2 Antibody
Paraffin Embedded Tissue: Human Heart
Cellular Data: Myocardial cells
Antibody Concentration: 4.0-8.0 µg/ml
Magnification: 400X



WB Suggested Anti-MSI2 Antibody Titration: 1.25µg/ml
ELISA Titer: 1:1562500
Positive Control: HepG2 cell lysate



Host: Rabbit
Target Name:MSI2
Sample Tissue:HepG2
Lane A: Primary Antibody
Lane B: Primary Antibody + Blocking Peptide
Primary Antibody
Concentration:2.5µg/ml
Peptide Concentration: 2.0µg/ml
Lysate Quantity: 25ug/lane Gel
Concentration: 12%

Please note: All products are 'FOR RESEARCH USE ONLY. NOT FOR USE IN DIAGNOSTIC OR THERAPEUTIC PROCEDURES'.