

ADAD2 antibody - middle region

Rabbit Polyclonal Antibody
Catalog # AI11845

Product Information

Application	WB
Primary Accession	Q8NCV1
Other Accession	NM_139174 , NP_631913
Reactivity	Human, Mouse, Rat, Rabbit, Pig, Dog, Horse, Bovine
Predicted	Human, Rabbit, Horse, Bovine
Host	Rabbit
Clonality	Polyclonal
Calculated MW	61755

Additional Information

Gene ID	161931
Alias Symbol	FLJ00337, TENRL
Other Names	Adenosine deaminase domain-containing protein 2, Testis nuclear RNA-binding protein-like, ADAD2, TENRL
Format	Liquid. Purified antibody supplied in 1x PBS buffer with 0.09% (w/v) sodium azide and 2% sucrose.
Reconstitution & Storage	Add 50 ul of distilled water. Final anti-ADAD2 antibody concentration is 1 mg/ml in PBS buffer with 2% sucrose. For longer periods of storage, store at 20°C. Avoid repeat freeze-thaw cycles.
Precautions	ADAD2 antibody - middle region is for research use only and not for use in diagnostic or therapeutic procedures.

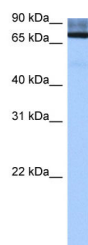
Protein Information

Name	ADAD2 (HGNC:30714)
Synonyms	TENRL
Function	Required for male fertility and normal male germ cell differentiation.
Cellular Location	Nucleus {ECO:0000250 UniProtKB:Q9D5P4}. Cytoplasm {ECO:0000250 UniProtKB:Q9D5P4}. Note=Diffusely cytoplasmic early in pachytene spermatocytes and coalesces into several perinuclear granules by late pachynema. {ECO:0000250 UniProtKB:Q9D5P4}

References

Ota,T., (2004) Nat. Genet. 36 (1), 40-45 Reconstitution and Storage:For short term use, store at 2-8C up to 1 week. For long term storage, store at -20C in small aliquots to prevent freeze-thaw cycles.

Images



WB Suggested Anti-ADAD2 Antibody Titration: 0.2-1 μ g/ml
Positive Control: Human Liver

Please note: All products are 'FOR RESEARCH USE ONLY. NOT FOR USE IN DIAGNOSTIC OR THERAPEUTIC PROCEDURES'.