

MGC27016 antibody - N-terminal region

Rabbit Polyclonal Antibody

Catalog # AI11848

Product Information

Application	WB, IHC
Primary Accession	Q8TBY0
Other Accession	NM_144979 , NP_659416
Reactivity	Human, Mouse, Rat, Rabbit, Zebrafish, Pig, Dog, Horse, Bovine
Predicted	Rat, Dog, Bovine
Host	Rabbit
Clonality	Polyclonal
Calculated MW	60023

Additional Information

Gene ID	166863
Alias Symbol	CT68, MGC27016
Other Names	Probable RNA-binding protein 46, Cancer/testis antigen 68, CT68, RNA-binding motif protein 46, RBM46
Format	Liquid. Purified antibody supplied in 1x PBS buffer with 0.09% (w/v) sodium azide and 2% sucrose.
Reconstitution & Storage	Add 50 ul of distilled water. Final anti-MGC27016 antibody concentration is 1 mg/ml in PBS buffer with 2% sucrose. For longer periods of storage, store at 20°C. Avoid repeat freeze-thaw cycles.
Precautions	MGC27016 antibody - N-terminal region is for research use only and not for use in diagnostic or therapeutic procedures.

Protein Information

Name	RBM46
Function	Essential for male and female fertility, playing a crucial role in regulating germ cell development by ensuring the proper progression of meiosis prophase I (By similarity). Regulates mitotic- to-meiotic transition in spermatogenesis by forming a complex with MEIOC and YTHDC2 which recognizes and down-regulates mitotic transcripts for a successful meiotic entry (By similarity). Required for normal synaptonemal complex formation during meiosis, binding meiotic cohesin subunit mRNAs containing GCCUAU/GUUCGA motifs in their 3'UTRs regions and positively regulating their translation (By similarity). Required for spermatogonial differentiation in both developing and adult testis (By similarity).

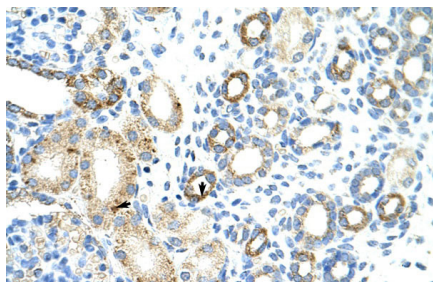
Cellular Location

Cytoplasm {ECO:0000250|UniProtKB:P86049}.

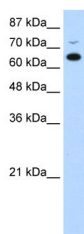
References

Strausberg,R.L., (2002) Proc. Natl. Acad. Sci. U.S.A. 99 (26), 16899-16903
Reconstitution and Storage:For short term use, store at 2-8C up to 1 week. For long term storage, store at -20C in small aliquots to prevent freeze-thaw cycles.

Images



Rabbit Anti-MGC27016 Antibody
Paraffin Embedded Tissue: Human Kidney
Cellular Data: Epithelial cells of renal tubule
Antibody Concentration: 4.0-8.0 µg/ml
Magnification: 400X



WB Suggested Anti-MGC27016 Antibody Titration: 0.2-1 µg/ml
Positive Control: Jurkat cell lysate

Please note: All products are 'FOR RESEARCH USE ONLY. NOT FOR USE IN DIAGNOSTIC OR THERAPEUTIC PROCEDURES'.