

MGC42174 antibody - N-terminal region

Rabbit Polyclonal Antibody

Catalog # AI11849

Product Information

Application	WB, IHC
Primary Accession	Q8IYB7
Other Accession	NM_152383 , NP_689596
Reactivity	Human, Mouse, Rat, Rabbit, Pig, Dog, Horse, Bovine
Predicted	Human, Mouse, Pig, Dog
Host	Rabbit
Clonality	Polyclonal
Calculated MW	99279

Additional Information

Gene ID	129563
Alias Symbol	FAM6A, MGC42174
Other Names	DIS3-like exonuclease 2 {ECO:0000255 HAMAP-Rule:MF_03045}, hDIS3L2, 3.1.13.- {ECO:0000255 HAMAP-Rule:MF_03045}, DIS3L2 {ECO:0000255 HAMAP-Rule:MF_03045}, FAM6A
Format	Liquid. Purified antibody supplied in 1x PBS buffer with 0.09% (w/v) sodium azide and 2% sucrose.
Reconstitution & Storage	Add 100 ul of distilled water. Final anti-MGC42174 antibody concentration is 1 mg/ml in PBS buffer with 2% sucrose. For longer periods of storage, store at 20°C. Avoid repeat freeze-thaw cycles.
Precautions	MGC42174 antibody - N-terminal region is for research use only and not for use in diagnostic or therapeutic procedures.

Protein Information

Name	DIS3L2 {ECO:0000255 HAMAP-Rule:MF_03045}
Synonyms	FAM6A
Function	3'-5'-exoribonuclease that specifically recognizes RNAs polyuridylated at their 3' end and mediates their degradation. Component of an exosome-independent RNA degradation pathway that mediates degradation of both mRNAs and miRNAs that have been polyuridylated by a terminal uridylyltransferase, such as ZCCHC11/TUT4. Mediates degradation of cytoplasmic mRNAs that have been deadenylated and subsequently uridylated at their 3'. Mediates degradation of uridylated pre-let-7 miRNAs,

contributing to the maintenance of embryonic stem (ES) cells. Essential for correct mitosis, and negatively regulates cell proliferation.

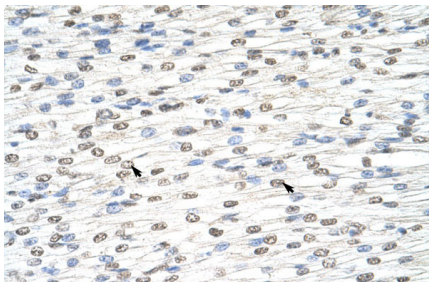
Cellular Location

Cytoplasm. Cytoplasm, P-body

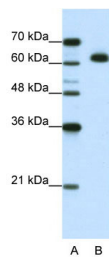
References

Ota,T., (2004) Nat. Genet. 36 (1), 40-45
Reconstitution and Storage: For short term use, store at 2-8C up to 1 week. For long term storage, store at -20C in small aliquots to prevent freeze-thaw cycles.

Images



Rabbit Anti-MGC42174 Antibody
Paraffin Embedded Tissue: Human Heart
Cellular Data: Myocardial cells
Antibody Concentration: 4.0-8.0 µg/ml
Magnification: 400X



WB Suggested Anti-MGC42174 Antibody Titration:
1.25µg/ml
ELISA Titer: 1:62500
Positive Control: Jurkat cell lysate

Please note: All products are 'FOR RESEARCH USE ONLY. NOT FOR USE IN DIAGNOSTIC OR THERAPEUTIC PROCEDURES'.