

# EIF4E3 antibody - middle region

Rabbit Polyclonal Antibody

Catalog # AI11852

## Product Information

---

<b>Application</b>	WB
<b>Primary Accession</b>	<a href="#">Q8N5X7</a>
<b>Other Accession</b>	<a href="#">NM_001134649</a> , <a href="#">NP_001128123</a>
<b>Reactivity</b>	Human, Mouse, Rat, Rabbit, Zebrafish, Pig, Dog, Horse, Bovine
<b>Predicted</b>	Rat, Rabbit, Zebrafish, Chicken, Bovine
<b>Host</b>	Rabbit
<b>Clonality</b>	Polyclonal
<b>Calculated MW</b>	24441

## Additional Information

---

<b>Gene ID</b>	317649
<b>Alias Symbol</b>	MGC39820, MGC86971
<b>Other Names</b>	Eukaryotic translation initiation factor 4E type 3, eIF-4E type 3, eIF-4E3, eIF4E type 3, eIF4E-3, EIF4E3
<b>Format</b>	Liquid. Purified antibody supplied in 1x PBS buffer with 0.09% (w/v) sodium azide and 2% sucrose.
<b>Reconstitution &amp; Storage</b>	Add 50 ul of distilled water. Final anti-EIF4E3 antibody concentration is 1 mg/ml in PBS buffer with 2% sucrose. For longer periods of storage, store at 20°C. Avoid repeat freeze-thaw cycles.
<b>Precautions</b>	EIF4E3 antibody - middle region is for research use only and not for use in diagnostic or therapeutic procedures.

## Protein Information

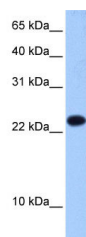
---

<b>Name</b>	EIF4E3
<b>Function</b>	Recognizes and binds the 7-methylguanosine-containing mRNA cap during an early step in the initiation of protein synthesis. May act as an inhibitor of EIF4E1 activity (By similarity).

## Images

---

WB Suggested Anti-EIF4E3 Antibody Titration: 0.2-1 µg/ml



## Positive Control: Human Liver

Please note: All products are 'FOR RESEARCH USE ONLY. NOT FOR USE IN DIAGNOSTIC OR THERAPEUTIC PROCEDURES'.