

SF1 antibody - N-terminal region

Rabbit Polyclonal Antibody

Catalog # AI11862

Product Information

Application	WB, IHC
Primary Accession	Q15637
Other Accession	NM_004630 , NP_004621
Reactivity	Human, Mouse, Rat, Rabbit, Zebrafish, Pig, Dog, Horse, Bovine
Predicted	Human, Mouse, Rat, Rabbit, Zebrafish, Bovine
Host	Rabbit
Clonality	Polyclonal
Calculated MW	68330

Additional Information

Gene ID	7536
Alias Symbol	BBP, MBBP, ZFM1, ZNF162, D11S636
Other Names	Splicing factor 1, Mammalian branch point-binding protein, BBP, mBBP, Transcription factor ZFM1, Zinc finger gene in MEN1 locus, Zinc finger protein 162, SF1, ZFM1, ZNF162
Format	Liquid. Purified antibody supplied in 1x PBS buffer with 0.09% (w/v) sodium azide and 2% sucrose.
Reconstitution & Storage	Add 100 ul of distilled water. Final anti-SF1 antibody concentration is 1 mg/ml in PBS buffer with 2% sucrose. For longer periods of storage, store at 20°C. Avoid repeat freeze-thaw cycles.
Precautions	SF1 antibody - N-terminal region is for research use only and not for use in diagnostic or therapeutic procedures.

Protein Information

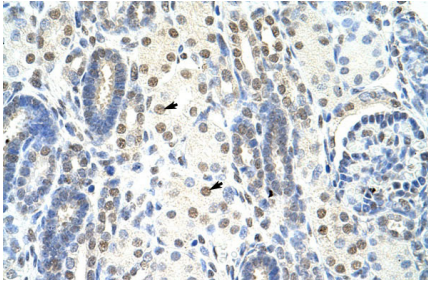
Name	SF1
Synonyms	ZFM1, ZNF162
Function	Necessary for the ATP-dependent first step of spliceosome assembly. Binds to the intron branch point sequence (BPS) 5'-UACUAAC-3' of the pre-mRNA. May act as transcription repressor.
Cellular Location	Nucleus.
Tissue Location	Detected in lung, ovary, adrenal gland, colon, kidney, muscle, pancreas,

thyroid, placenta, brain, liver and heart

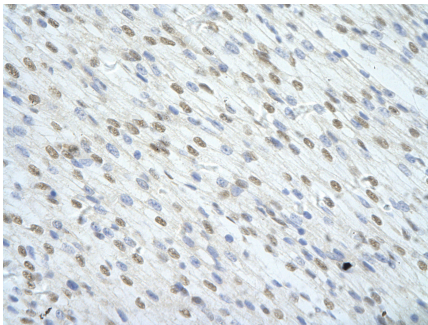
References

Huang,Y.H., (2006) Endocrinology 147 (5), 2481-2489
Reconstitution and Storage: For short term use, store at 2-8C up to 1 week. For long term storage, store at -20C in small aliquots to prevent freeze-thaw cycles.

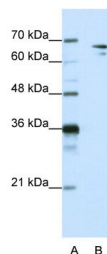
Images



Rabbit Anti-SF1 Antibody
Paraffin Embedded Tissue: Human Kidney
Cellular Data: Epithelial cells of renal tubule
Antibody Concentration: 4.0-8.0 µg/ml
Magnification: 400X



Rabbit Anti-SF1 antibody
Paraffin Embedded Tissue: Human Heart cell
Cellular Data: cardiac cell of renal tubule
Antibody Concentration: 4.0-8.0 µg/ml
Magnification: 400X



WB Suggested Anti-SF1 Antibody Titration: 1.25µg/ml
ELISA Titer: 1:312500
Positive Control: HepG2 cell lysate
SF1 is supported by BioGPS gene expression data to be expressed in HepG2

Please note: All products are 'FOR RESEARCH USE ONLY. NOT FOR USE IN DIAGNOSTIC OR THERAPEUTIC PROCEDURES'.