

Wnt11 Antibody - middle region

Rabbit Polyclonal Antibody

Catalog # AI11864

Product Information

Application	WB
Primary Accession	P48615
Other Accession	NM_009519 , NP_033545
Reactivity	Human, Mouse, Rat, Rabbit, Pig, Dog, Horse, Bovine
Predicted	Human, Mouse, Rat, Rabbit, Pig, Dog, Horse, Bovine
Host	Rabbit
Clonality	Polyclonal
Calculated MW	39135

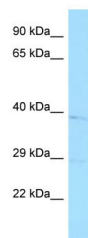
Additional Information

Gene ID	22411
Other Names	Protein Wnt-11, Wnt11, Wnt-11
Format	Liquid. Purified antibody supplied in 1x PBS buffer with 0.09% (w/v) sodium azide and 2% sucrose.
Reconstitution & Storage	Add 50 ul of distilled water. Final anti-Wnt11 antibody concentration is 1 mg/ml in PBS buffer with 2% sucrose. For longer periods of storage, store at 20°C. Avoid repeat freeze-thaw cycles.
Precautions	Wnt11 Antibody - middle region is for research use only and not for use in diagnostic or therapeutic procedures.

Protein Information

Name	Wnt11
Synonyms	Wnt-11
Function	Ligand for members of the frizzled family of seven transmembrane receptors. Probable developmental protein. May be a signaling molecule which affects the development of discrete regions of tissues. Is likely to signal over only few cell diameters.
Cellular Location	Secreted, extracellular space, extracellular matrix

Images



Host: Rabbit
Target Name: Wnt11
Sample Tissue: Mouse Stomach lysates
Antibody Dilution: 1.0µg/ml

Please note: All products are 'FOR RESEARCH USE ONLY. NOT FOR USE IN DIAGNOSTIC OR THERAPEUTIC PROCEDURES'.